

Iwate University Guide

Prefectural University



【University History】

- April 1951 Iwate Prefectural Morioka Junior College established.
- April 1990 Iwate Prefectural Miyako College established.
- April 1998 Iwate Prefectural University established. Mr. Junichi Nishizawa was appointed to the first presidency.
- April 2000 Graduate schools established. [Master's Program in Software and Information Science / Doctoral Program in Software and Information Science / Master's Program in Policy Studies]
- April 2002 New graduate schools established. [Master's Program in Nursing Studies / Master's Program in Social Welfare studies / Doctoral Program in Policy Science]
- April 2004 New graduate schools established. [Doctoral Program in Nursing Studies / Doctoral Program in Social Welfare]
- April 2005 Iwate Prefectural University became a public university corporation. Mr. Makoto Taniguchi was appointed to the presidency. First phase midterm goals and midterm plan period started. Iwate Prefectural University Regional Cooperative Research Center established.
- April 2006 Aiina Campus established at Morioka Station West exit. Center for Liberal Arts Education and Research established.
- April 2009 Mr. Yoshihisa Nakamura was appointed to the presidency.
- May 2009 Takizawa Village (Currently Takizawa City) IPU Innovation Center established.
- April 2011 Second phase midterm goals and midterm plan period started. Iwate Monozukuri and Software Integration Technology Center (i-MOS) established. Center for Regional Policy Studies established.
- April 2013 Center for the Advancement of Higher Education established.
- April 2014 Center for Liberal Arts Education and Research was integrated into the Center for the Advancement of Higher Education.
- April 2015 Mr. Atsuto Suzuki was appointed to the presidency.

Striving to become a University that contributes to Core Human Resource Development and a Generation of Vitality in the Local Community.

Based on its fundamental principles of "student-centered education" and "research and local contribution efforts that vitalize the region", Iwate Prefectural University aims to educate human resources key to local businesses and contribute to the vitalization of the local community. (Second phase midterm goals and midterm plan)

【Student-centered education】

Since our aim is to be "a university that increases student motivation", our programs include a solid education in liberal arts, meant to foster the students' understanding of human nature, as well as specialized education that stimulates active learning. Moreover, by providing volunteering opportunities and programs for the development of work skills, we place an emphasis on nurturing vigorous, independent individuals who can identify and solve problems.

[Education to promote students' own identities]

Regional Involvement Program

To face the regional problems and heighten a strong sense of purpose and passion for learning.

The prefectural university which has a policy of "University with the Community" and engages in educational and research activities along with the community. In order to advance this even further, we started the "Regional Involvement Program" in 2014 mainly for freshman and sophomore students as a pre-stage of promoting the educational activities facing the community.

This is for students to learn about the community through the overnight field-work by visiting various areas of the prefecture. The purpose is to create the opportunity for voluntary and active "Learning" by experiencing the current situation and problems of each community and considering the solutions to the problems.



[Strategies in order to develop students' employability]

IPU-E Project

We are enhancing the employability through voluntary activities.

"IPU-E Project" was started with a goal of enhancing the employability required in real life. With it the university will, through the financial aid and operational advices, support projects which are planned and conducted as groups by students.

Utilizing this program, students will not only expand their activities in various fields such as regional exchange, regional revitalization, earthquake reconstruction and introducing new technologies, but also gaining precious experience and knowledge by independently proposing, planning, conducting their projects with freedom to associate with various people in and out of the university.



and local contribution efforts that vitalize the region", Iwate Prefectural University aims to educate human resources key to local businesses and contribute to the vitalization of the local community. (Second phase midterm goals and midterm plan)

【Research and local contribution efforts to vitalize the region】

As a "hub of knowledge", IPU is performing various activities in order to vitalize the local community, such as creating new assets through Industry-University-Government Collaborations, strengthening its function as a think tank for local issues, and providing learning opportunities to the citizens of the prefecture. Furthermore, as part of its efforts towards reconstruction after the Great East Japan Earthquake and Tsunami, IPU has been engaged in support activities and reconstruction research which fully utilize our intellectual resources and academic specialties; through such efforts, we aim to gain the confidence of the local community to an even higher degree.

[Industry-University-Government Collaborations]

Regional society is being invigorated through research activities that go beyond their narrow domains.

In April 2011, the Iwate Monozukuri and Software Integration Technology Center (i-MOS) and the Center for Regional Policy Studies were set up in the Regional Cooperation Building.

i-MOS was established with the aim to create new innovations and to become a center of the industrial agglomerations by integrating the software research of IPU and the manufacturing technology which Iwate prefecture is proud of. We are engaged in promoting the research based on "the Next-Generation Intelligent Information Technology", nourishing technicians with sophisticated skills for manufacturing, supporting prototype developments, as well as performing the function of liaison to match the industry and academia, and also to secure research funds.

The Center for Regional Policy Studies functions as a think tank responsible for dealing with regional issues involving the citizens of Iwate prefecture, as well as for reinforcing the bonds between the industries, various organizations, and administrative agencies. We are making efforts to use the results of our research to serve the local communities by providing advice based on empirical research, deploying lecturers, and holding symposiums.



[Support for the total reconstruction]

Reconstruction support by utilizing IPU's Intellectual property and human resources.

IPU opened up its facilities immediately after the Great East Japan Earthquake and Tsunami of March 11, 2011, providing accommodation for students and collecting information.

Moreover, in April right after the earthquake, we have visited 11 coastal communities affected by the tsunami in order to explain our support systems. We have been continuously providing support with expertise of each faculty and teaching staff based on the requests from disaster affected areas.

On April 5, 2011, Disaster Recovery Support Center was established as a general center for inquires concerning volunteer activities involving students and teachers as well as deployment of teaching staff. Furthermore, the Disaster Reconstruction Support Center was established within the Center for Regional Policy Studies, and research has begun on 15 topics in the three fields of living, industry and economy, and society/lifestyle infrastructures.

"Progressive Reconstruction and Recovery Project Research from the Great East Japan Earthquake and Tsunami" was launched in 2014 and has been advancing since, so that we can take on research projects which directly contribute to the recovery of affected areas for many years on a large scale.





We anticipate the creation of new culture and the great potential of Iwate Prefectural University.

Iwate Prefectural University is located on magnificent land with the view of Mt. Iwate and Mt. Himekami as well as Kitakami River flows along side.

It was established in 1998 with “In hope of creating a new era of harmony among nature, science and mankind, we provide an education that fosters independence, sound knowledge, rich sensibility and highly specialized skills which contribute to the enrichment of humanity and society.” as its founding principal.

On March 11, 2011, coastal areas of Iwate prefecture were hit by extraordinarily huge tsunami and received extensive damages. Right after the disaster, our students as well as faculty and staff immediately participated in various restoration and reconstruction activities and still continue to play a major role in the earthquake recovery volunteer efforts among students from all over the country. Besides, a variety of sports and cultural club activities are becoming increasingly active each year, they have been successful and won many prizes in various competitions and contests.

As you can see, our university is filled with young people who are heading into the future with a positive attitude towards their studies, social activities and extracurricular activities.

From now on, as the globalization progress intensifies, you would have more opportunities to face the world. You will learn the culture and the civilization of Japan and also other countries in the world, as well as cultivating a profound knowledge, intelligence, communication skills and sound judgement at all times. I hope you will be a someone with a strong curiosity and a spirit to face the challenges so that you would be able to succeed in various fields not only in Iwate but also the world outside. In order to do so, please make sure you do your best at your assignments no matter how small they are. Making every effort will give you a sense of achievement and confidence. I am certain that the accumulation of this is very important for character building in this age of globalization.

At this great campus situated on Iwate's symbol Takizawa region, both students and faculty will together devote themselves to developing energetic and attractive university while inheriting good traditions of Iwate Prefectural University, and aim to create a new culture in Iwate through education and research activities.

Iwate Prefectural University

Iwate Prefectural University Morioka Junior College

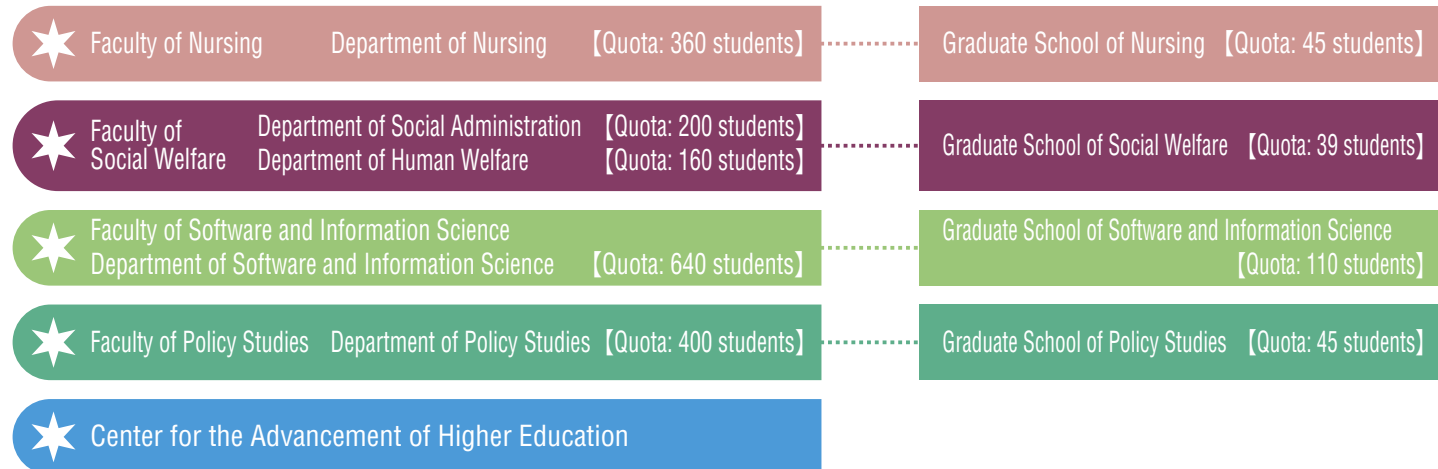
Iwate Prefectural University Miyako College

President

Atsuto Suzuki

Iwate Prefectural University Organization: Programs of study and areas of research

Iwate Prefectural University



Morioka Junior College



Miyako College



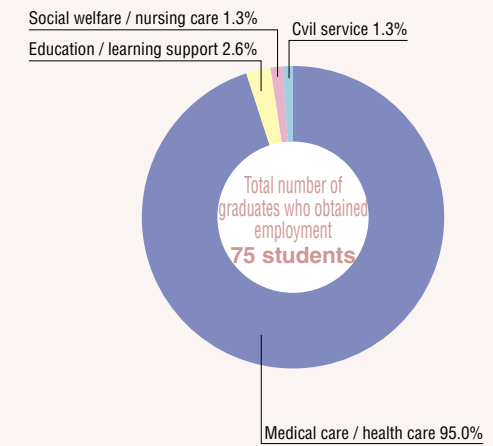
[Faculty of Nursing]

- We aim to educate nursing staff with rich specialized knowledge and techniques.
- Specialized subjects and on-site training starting from the first year help our students gain practical skills from an early stage.
- Our students will learn nursing at various practical training facilities such as hospital, health center, home visit nursing station, welfare facility for caring elderly people, day care center and schools.

■ Qualifications and licenses

Eligibility for admission to the National Examination for Nurses / Eligibility for admission to the National Examination for Public Health Care Nurses / Eligibility for admission to the National Examination for Midwives / First-class teaching certificate for upper secondary school (Health education) / First-class certificate for nursing teachers

■ Fields of employment chosen by graduates [2014 results]



[Faculty of Social Welfare]

Department of Social Welfare

- Students study widely and synthetically, from the interpersonal assistance to systems and policies to function.

Department of Human Welfare

- Our students acquire psychology and human development in addition to the Social welfare basis, and learn about the assistance on various stages of life.

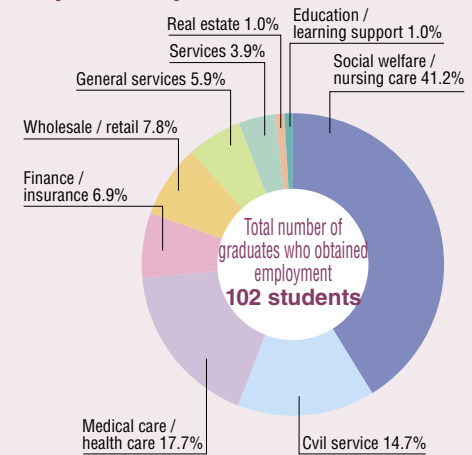
■ Qualifications and licenses

Eligibility for admission to the National Examination for Certified Social Workers / Eligibility for admission to the National Examination for Psychiatric Social Workers / Qualification for appointment as social welfare secretary / Qualification for appointment as childcare worker / Qualification for appointment as child welfare officer

■ Qualifications that can be acquired only through the Department of Human Welfare

Qualification as a nursery teacher / First-class certificate for kindergarten teachers / Qualification as a Certified Psychologist of the Japanese Psychological Association

■ Fields of employment chosen by graduates [2014 results]



[Faculty of Software and Information Science]

- With practical learning and research as its concept, students learn about development and application of advanced information technology based on the curriculum which supports students' development in their self-initiatives.
- Enriched educational environment has been enhanced such as “Lectureship-based credit systems”, that is a precise education structure led by multiple faculty members, and also every student is to receive a personal computer on entering the university.

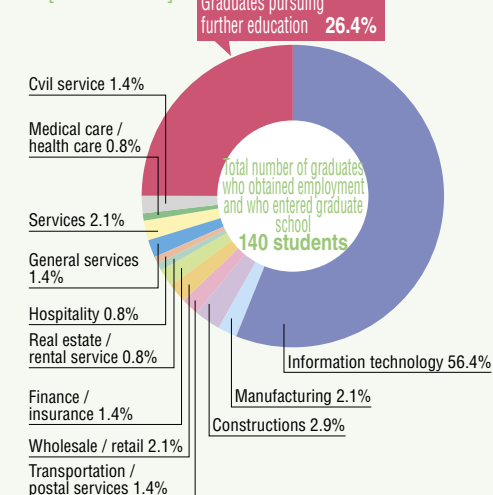
■ Qualifications and licenses

First-class teaching certificate for upper secondary school (Information)

■ Qualifications and certifications relevant to the curriculum

Fundamental Information Technology Engineer Examination / Applied Information Technology Engineer Examination

■ Post-Graduation career paths chosen by graduates [2014 results]



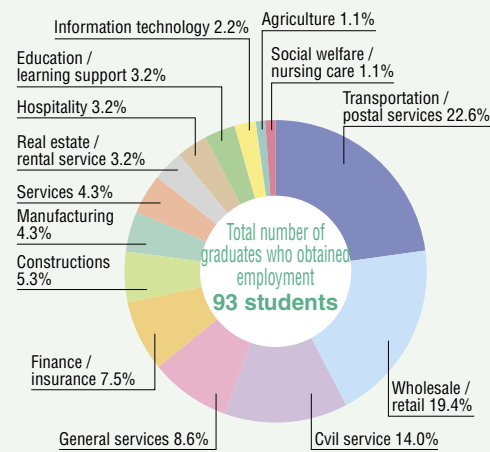
[Faculty of Policy Studies]

- Our students learn about the various issues of contemporary society, as well as the skills and ideal ways of thinking necessary to solve them.
- Starting from the third year, courses branch into two areas of study: Administration/Management and The environment/Local communities. Both courses focus on "learning from on-site experience, viewing it in many aspects and applying" through practical training and seminars.
- Starting in the third year, students take part in seminars where they study in depth a topic of their choice on which they submit their graduation theses.

■ Qualifications and licenses

First-class teaching certificate for lower secondary school (Social studies) / First-class teaching certificate for upper secondary school (Geography and History) / First-class teaching certificate for upper secondary school (Civics) / Social researcher (conditional) / Biotope planners and builders (conditional) / Doctor for environmental restoration (conditional)

■ Fields of employment chosen by graduates [2014 results]



Campuses of Iwate Prefectural University

Takizawa Campus



Faculty of Nursing / Faculty of Social Welfare / Faculty of Software and Information Science / Faculty of Policy Studies / Morioka Junior College
152-52 Sugo, Takizawa-shi, Iwate-ken 020-0693 JAPAN
Phone: +81-19-694-2000 FAX: +81-19-694-2001



Regional Cooperation Building (i-MOS, Regional Policy Research Center)
152-89 Sugo, Takizawa-shi, Iwate-ken 020-0611 JAPAN
Phone: +81-19-694-3330 FAX: +81-19-694-3331

[Morioka Junior College]

Department of Life Science

- There are the Life Science major which analyzes human lifestyle scientifically such as energy and environmental issues with "Housing" and "Clothing" as its theme, and also the Food and Nutrition major which examines "Food" from the wide perspective and aims to provide knowledge and techniques necessary to acquire the qualifications for becoming a nutritionist. We endeavor to cultivate individuals with the practical ability and knowledge necessary to respond to the needs of contemporary society.

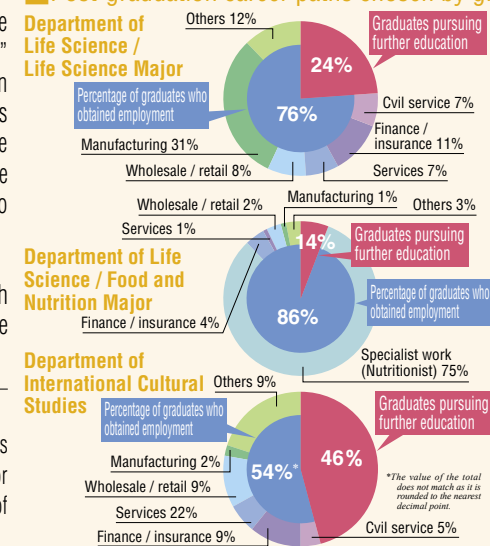
Department of International Cultural Studies

- The goal is to educate globally-minded individuals with high language and communication skills, capable of active involvement in the international society.

■ Qualifications and licenses

Eligibility for admission to the National Examination for Second-class Architects / Eligibility for admission to the National Examination for Architects for Wooden Buildings (Life Science Major) / Certificate of dietician (Food and Nutrition Major)

■ Post-graduation career paths chosen by graduates [2014 results]



Miyako Campus



Miyako College
1-5-1 Kanan, Miyako-shi, Iwate-ken 027-0039, JAPAN
Phone: +81-193-64-2230 FAX: +81-193-64-2234

[Miyako College]

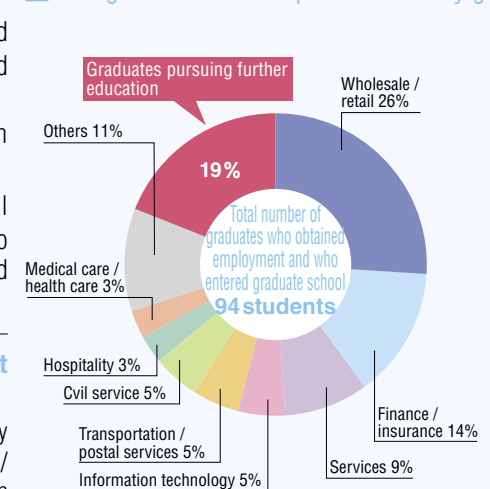
Department of Business Management and Information Sciences

- Students acquire the knowledge and techniques behind the advanced use of information as well as theories and practices related to management and accounting.
- From the first year all students have their own laptop on which they cultivate and practice computer skills.
- Students acquire the professional knowledge, as well as the ability, to select and apply information; they also develop a broad view of the world and qualities needed as regional leaders.

■ Qualifications and certifications relevant to the curriculum

Certified Secretary Examination / Information Technology Engineer Test / Official Business Skills Test in Bookkeeping / EIKEN Test in Practical English Proficiency / PC Certification Examination / TOEIC / TOEIC BRIDGE

■ Post-graduation career paths chosen by graduates [2014 results]



Aiina Campus

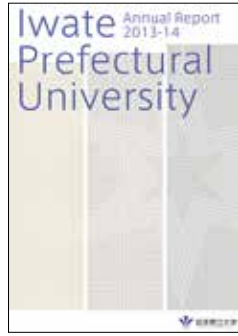


Satellite Campus
1-7-1 Moriokaeki-Nishidori, Morioka-shi, Iwate-ken 020-0045, JAPAN
Iwate Prefecture Citizen's Cultural Exchange Center (Aiina) 7th Floor
Phone: +81-19-606-1770 FAX: +81-19-606-1771

Regarding more details and latest news, please refer to these brochures and our website.



IPU Guidance



IPU Annual report



Magazine "IPU Action!"



IPU official website
(<http://www.iwate-pu.ac.jp>)

*Each brochures are available online.

ACCESS GUIDE

■ By Airplane

- Sapporo → About 1 hour → Hanamaki
- Osaka (Itami) → About 1 hour and 20 minutes → Hanamaki
- Nagoya (Komaki) → About 1 hour and 10 minutes → Hanamaki
- Fukuoka → About 2 hours → Hanamaki

*From Iwate Hanamaki Airport to IPU

- Iwate Hanamaki Airport → About 1 hour By bus → Morioka Station
From Morioka Station to IPU, take a train or a bus. (See below)

■ By Train : JR local line and Sinkansen

- From Shin-Aomori → About 1 hour → Morioka
- From Akita → About 1 hour and 40 minutes → Morioka
- From Sendai → About 45 minutes → Morioka
- From Yamagata → About 2 hours → Morioka
- From Fukushima → About 1 hour and 40 minutes → Morioka
- From Tokyo → About 2 hours and 30 minutes → Morioka

*The shortest time. Transfer time not included.

■ By Bus : Bus routes from Morioka to IPU

- Iwate-ken Kotsu / Iwate Kenpoku Bus
Board at Morioka Station East Bus Stop No.2
▶ First bus departure [7:10] ▶ Last bus departure [21:20]

*Please inquire about the update to each bus company.

■ Local train schedule : From Morioka station to Takizawa station

- Iwate Galaxy Railway [IGR]
Morioka station ▶ First train departure [5:41] ▶ Last train departure [23:20]
Takizawa station ▶ First train departure [6:20] ▶ Last train departure [22:27]

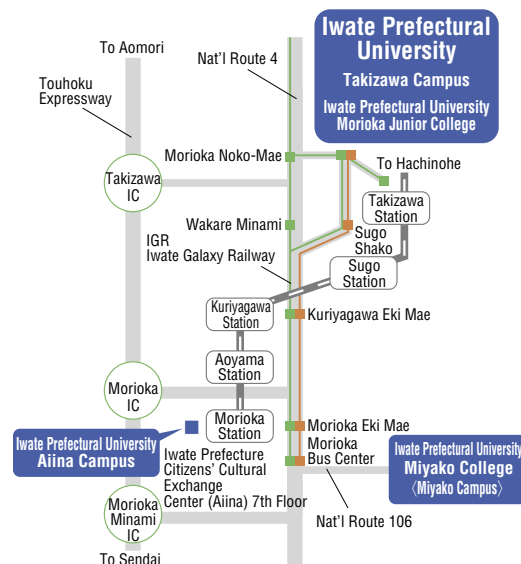
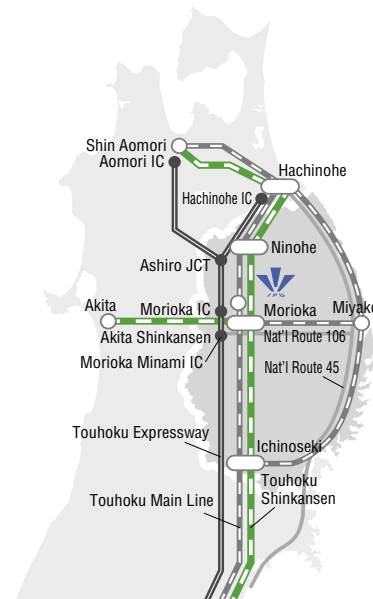
*There is also a shuttle bus available from Takizawa Eki-mae (i.e. Takizawa station) to Iwate Kenritsu Daigaku (i.e. IPU)

*Timetables are subject to change. Please check for the update.

*About 15 minutes walk from Takizawa station to IPU.

■ Tohoku Expressway

About 5 minutes from Takizawa Interchange (Exit the Tohoku Expressway, follow National Road 4 in the direction to Aomori, and make a right turn at the second intersection).



Contact information

Iwate Prefectural University Head Office

152-52 Sugo, Takizawa-shi, Iwate-ken 020-0693 JAPAN

[Admissions] Admissions Group, Education and Research Support Section

[Job opportunities and employment for graduating students] Employment Support Group, Student Services Section

[Others] Planning and Public relations Group, Planning Section

[Web] <http://www.iwate-pu.ac.jp>

For details, please contact the IPU offices.

Iwate Prefectural University

Search



Phone: +81-19-694-2014

Phone: +81-19-694-2020

Phone: +81-19-694-2005