

University Guide

# 岩手県立大学

IWATE  
PREFECTURAL  
UNIVERSITY



## University History

April 1951 Iwate Prefectural Morioka Junior College established  
April 1990 Iwate Prefectural Miyako Junior College established  
April 1998 Iwate Prefectural University established / Dr. Junichi NISHIZAWA was appointed as the first president  
April 2000 Graduate schools established [Master's and Doctoral Programs in Software and Information Science / Master's Program in Policy Studies]  
April 2002 New graduate schools established [Master's Program in Nursing Studies / Master's Program in Social Welfare Studies / Doctoral Program in Policy Studies]  
April 2004 New graduate schools established [Doctoral Program in Nursing Studies / Doctoral Program in Social Welfare]  
April 2005 Iwate Prefectural University became a public university corporation / Dr. Makoto TANIGUCHI was appointed as president  
First phase of medium-term goals and planning period initiated

April 2005 Iwate Prefectural University Regional Cooperative Research Center established  
April 2006 Aiina Campus established at Morioka Station West Exit / Center for Liberal Arts Education and Research established  
April 2009 Dr. Yoshihisa NAKAMURA was appointed as president  
April 2011 Second phase of medium-term goals and planning period initiated  
Iwate Monozukuri / Software Integration Technology Center (i-MOS) established  
Center for Regional Policy Studies established  
April 2013 Center for the Advancement of Higher Education established  
April 2014 Center for Liberal Arts Education and Research was integrated into the Center for the Advancement of Higher Education  
April 2015 Dr. Atsuto SUZUKI was appointed as president  
April 2017 Third phase of medium-term goals and planning period initiated

Faculty of Nursing

Faculty of Social Welfare

Faculty of Software and  
Information Science

Faculty of Policy Studies

Morioka Junior College

Miyako Junior College



岩手県立大学  
Iwate Prefectural University

# Message from the President

## Focusing on Fulfilling the University's Social Responsibilities, Regional Think Tanks, and Cultivating Core Human Talent

Iwate Prefectural University  
Iwate Prefectural University Morioka Junior College  
Iwate Prefectural University Miyako Junior College

President Atsuto SUZUKI



The residents of Iwate Prefecture have high hopes for Iwate Prefectural University functioning as a hub of advanced education and research that will lead the way into the 21<sup>st</sup> century founded on the history, natural environment, and traditions of the region. IPU was established with the philosophy of contributing to the molding of a society of rich humanity and creating a new era of harmony among humans, nature and science, fostering deeply knowledgeable, sensitive independent people with highly specialized skills.

We celebrated our 20<sup>th</sup> anniversary in 2018, and are focusing our energy on the role that a regionally-based institution of higher education is expected to play in these times; in other words, fulfilling the social responsibilities of the university as a social and regional institution that is striving to tackle and resolve the issues faced by humankind. In particular, we are making efforts to establish a more flexible cooperative and collaborative system with locals, public institutions, and industry, to respond to social issues such as population decline, falling birth-rate, aging population, worsening environment, and inequality, and to establish a sustainable society for the region.

For better or worse, humankind is connected across the globe. We want our educators and students in this global environment to understand that the world's problems are not somebody else's to deal with, and to hone their capabilities and senses to see their own behaviors and the events taking place around them from a global perspective. In order to internationally develop the university's pursuit of its social responsibilities, Iwate Prefectural University has participated fully in the United Nations Academic Impact initiative, which has connected the United Nations with institutions of higher education, since 2009. We are promoting the following four principles of action: increasing people's awareness as international citizens, addressing poverty issues, promoting sustainable development goals (SDGs), and promoting cross-cultural dialog and mutual understanding, while eliminating intolerance.

In these ways, the university is committed to cultivating its role as a regional think tank with multilateral functions, including cultural knowledge and social and international activities, as well as educating core human talent for the region through educational, research, and regional activities.



# Empowering the youth of Iwate for the future of Iwate

As a “hub of learning” that fosters future leaders, we are engaged in paving the way for the future of the region and contributing to society.

(Third phase medium-term goals and medium-term plan)

## Fundamental Ideals

[Education to foster future breakthroughs]

[Regional contributions that help build the future]

[High-level research skills as the foundation of education and regional contribution]

## Fundamental Goals

### Enhancing the spirit of creativity and intellectual inquiry within students (Education)

Through practical, hands on learning and regionally focused education, we are creating a local talent resource with the spirit of intellectual inquiry and creativity needed to pave the way for the future of the region.

“Iwate Creative Learning” Kamaishi course fieldwork



### Creating new value (Research)

We are creating new value via foundational research for regional infrastructure and society as well as applied research based on practical learning and education. With this, we are responding to changes in the social environment, and promoting academic research with intersecting fields of expertise.

Iwate Prefectural University research introductory video “Kendai Chiiki Laboratory” (3D sphere display)



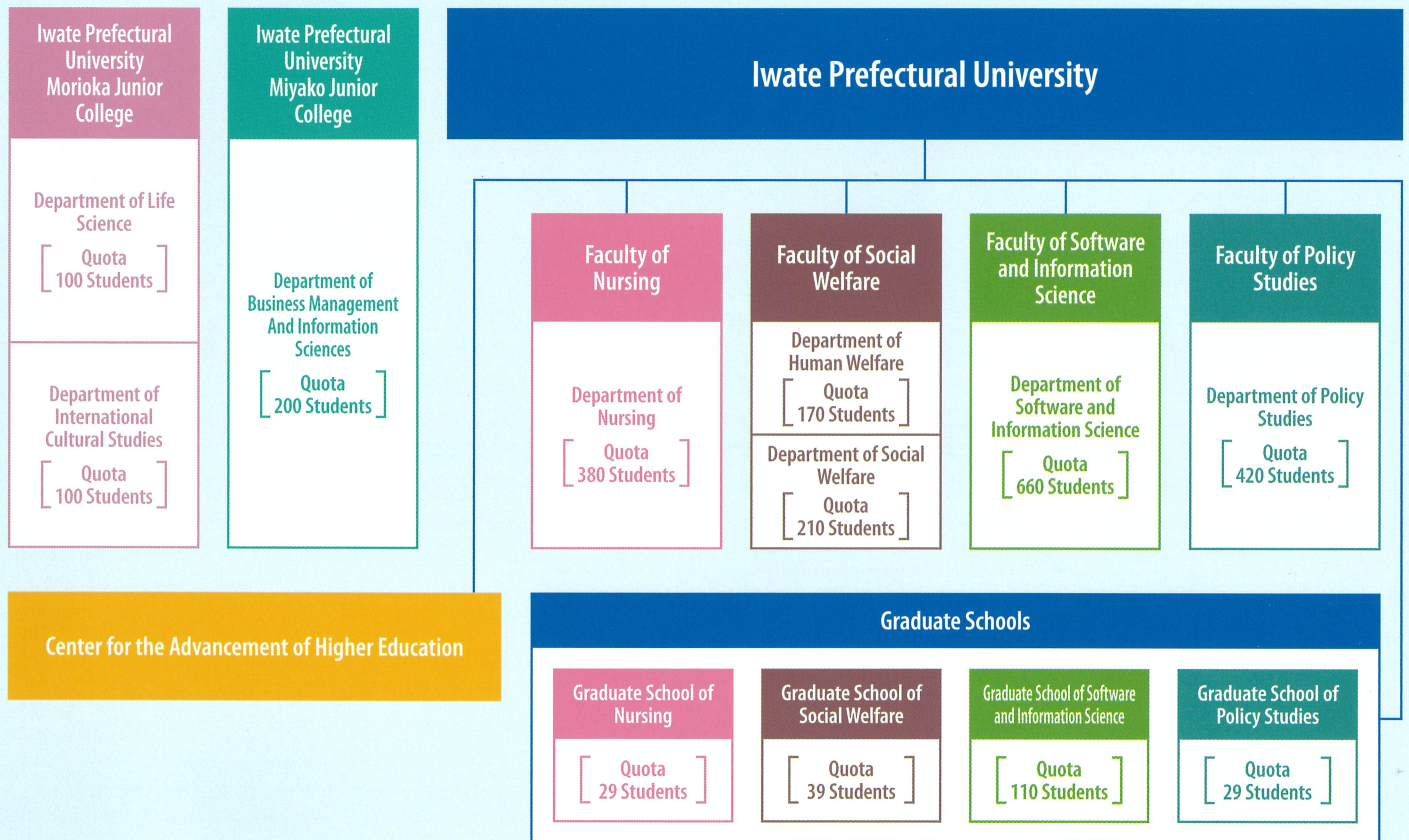
### Contributing to regional development (Regional Contribution)

Through diverse authentic learning experiences and a focus on local issues we are cultivating future local leaders to promote the region. As a local hub, we are contributing to regional vitality and supporting the internationalization of the region.

Joint volunteer with Ohio University and Chubu University for reconstruction support



# Iwate Prefectural University Organization: Programs of study and areas of research



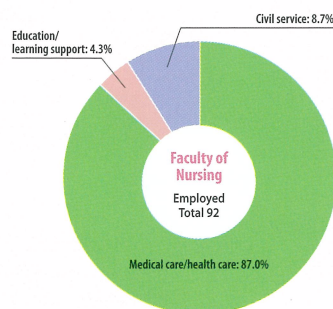
## Faculty of Nursing

Takizawa Campus

- We aim to educate nursing staff with rich specialized knowledge and techniques.
- We foster the ability to gather, consider, and express information for the discovery and resolution of issues.
- Specialized subjects and on-site training starting from the first year help our students gain practical skills from an early stage.
- We provide nursing education in a variety of practical facilities, such as hospitals, health centers, home-visit nursing stations, nursing homes, daycares, and schools.

### Qualifications and licenses

Eligibility for admission to the National Examination for Nurses / Eligibility for admission to the National Examination for Public Health Care Nurses / Eligibility for admission to the National Examination for Midwives / First-class certificate for nursing teachers / First-class teaching certificate for upper secondary school (Health education)



▲ Career paths chosen by graduates (2018 results)



## Department of Social Welfare

- Students study widely and comprehensively, from interpersonal assistance to community support, systems and policies.

## Department of Human Welfare

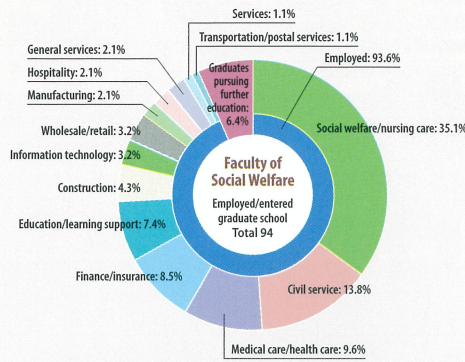
- In addition to a foundation of social welfare, a deepened knowledge of psychology and human development help our students to assist others in various stages and aspects of life.

### Qualifications and licenses

Eligibility for admission to the National Examination for Certified Social Workers / Eligibility for admission to the National Examination for Psychiatric Social Workers / Qualification for appointment as social welfare secretary / Qualification for appointment as childcare worker / Qualification for appointment as child welfare officer (in some cases, 1 to 2 years of work experience at a designated facility are required after graduation)

### Qualifications that can be acquired only through the Department of Human Welfare

Qualification as a nursery teacher / Eligibility for admission as a certified public psychologist (either completion of a postgraduate degree or work experience is required in order to obtain admission qualifications)



▲ Career paths chosen by graduates (2018 results)



# Faculty of Software and Information Science

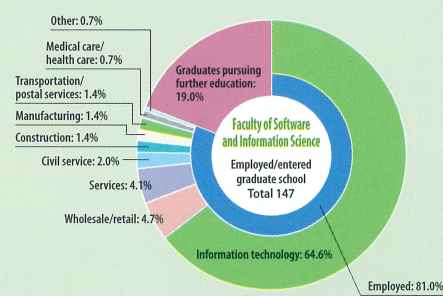
- With practical learning and research as a key component, students learn about the development and application of advanced information technology within a curriculum that fosters independence and supports them in their individual endeavors.
- Mixed year-level team projects allow students to engage in active learning to research, deliberate and present through independent and interactive processes.
- As a cooperating member of the enPIT network (Ministry of Education, Culture, Sports, Science and Technology project), we actively promote industry partnerships to help foster the next generation of creative people hoping to add new value and services in the field of ICT/IoT.

### Qualifications and licenses

First-class teaching certificate for upper secondary school (information)

### Qualifications and certifications relevant to the curriculum

Fundamental Information Technology Engineer Examination / Applied Information Technology Engineer Examination



▲ Career paths chosen by graduates (2018 results)

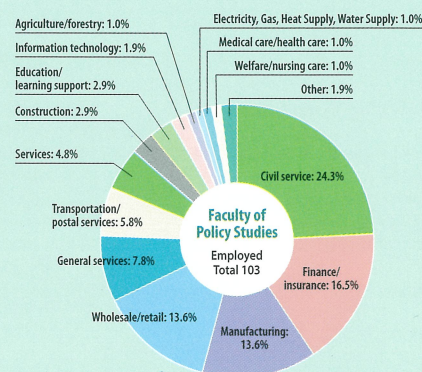


# Faculty of Policy Studies

- Our students learn about the various issues facing contemporary society, as well as the skills and ways of thinking necessary to solve them.
- From the third year onwards, courses branch into three areas of study: Law/Administration, Economics/Management, and Regional Society/Environment. All courses focus on learning from rich on-site experience, and applying that learning through practical training and seminars.
- Starting in third year, students take part in seminars where they study a topic of their choice in depth, culminating in the submission of a graduation thesis on that topic.

### Qualifications and licenses

Social researcher/Biotope supervisor Second-class (some examination subjects exempted)/Environmental Restoration Doctor (NAREC)



▲ Career paths chosen by graduates (2018 results)



# Center for the Advancement of Higher Education

Takizawa Campus

This center was established with an eye to the university's external environment, focusing on various work that supports university education. In a holistic manner, the center is involved with planning and management related to not only foundational education, but also course improvement and educational reform.

## Foundational Education Program

The following foundational education courses were established as an interdisciplinary program aimed at supporting fundamental learning (Developing the ability to learn at university), empowering students with the necessary knowledge and skills for both regional and international society (Knowing the world in which we live), and cultivating comprehensive intellect and judgment through a diverse and rich educational experience. (Understanding and using learning).

<b>Basic Courses</b>	[Developing the ability to learn at university] Introductory course, English, Information processing, Health and Physical Education
<b>Liberal Arts Courses</b>	[Knowing the world in which we live] Regional culture (courses in regional understanding and regional learning) International culture (courses in foreign languages and global understanding) [Knowing and using scholarship] Courses in foundational education and subject-specific education

## Minor Program

In addition to your major (the academic field of the faculty to which you belong), we also offer two minor programs that offer system learning with which you will apply your major to understand the world from regional and international perspectives, and expand your practical approach beyond the confines of the faculty.

## Completing the program requirements will grant students a degree.

- Minor "Regional Creation Education Program" (Degree: "Regional Creator")
- Minor "International Liberal Arts Education Program" (Degree: "Bachelor of International Liberal Arts")



# Morioka Junior College

Takizawa Campus

## Department of Life Science

- We offer a Lifestyle Design major that focuses on both "Housing" and "Clothing", and also the Food and Nutrition major which examines "Food" from a wide perspective, aiming to provide the knowledge and techniques necessary to qualify as a nutritionist. We endeavor to cultivate individuals with the practical ability and knowledge necessary to respond to the needs of contemporary society.

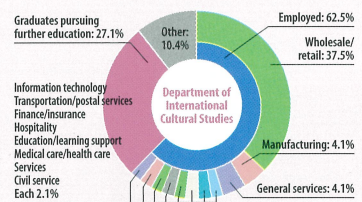
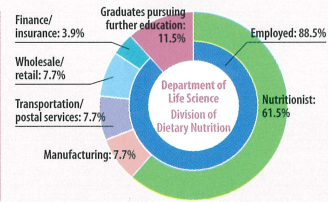
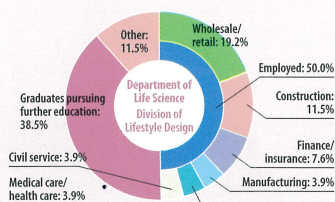
## Department of International Cultural Studies

- Our goal is to educate globally-minded individuals with high language and communication skills, capable of active involvement in international society.

## Qualifications and licenses

Eligibility for admission to the National Examination for Second-class Architects / Eligibility for admission to the National Examination for Architects for Wooden Buildings (Lifestyle Design major) / Certificate of dietician (Food and Nutrition Major)

## ▼ Career paths chosen by graduates (2018 results)



# Miyako Junior College

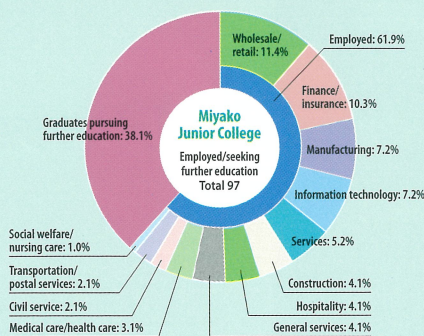
Miyako Campus

## Department of Business Management And Information Sciences

- Students systematically take specialized courses in management, management information, and ICT to develop the knowledge and specialized skills for understanding business management and society. Students are given an opportunity to apply these attributes via corporate activities involving information and communication technology, etc.
- Through liberal arts courses, English courses, and regionally linked education, students develop the qualifications they need to contribute to society as international and regional leaders with a broad perspective.

## Qualifications and certifications relevant to the curriculum

EIKEN (Test in Practical English Proficiency) / TOEIC L&R / TOEIC Bridge L&R / Official Business Skills Test in Bookkeeping / Retail marketing certification / Certified Secretary Examination / Information Technology Engineer Test (basic information processing technologist, IT passport) / PC Certification Examination (ICT proficiency assessment)



▲ Career paths chosen by graduates (2018 results)



# Campuses of Iwate Prefectural University

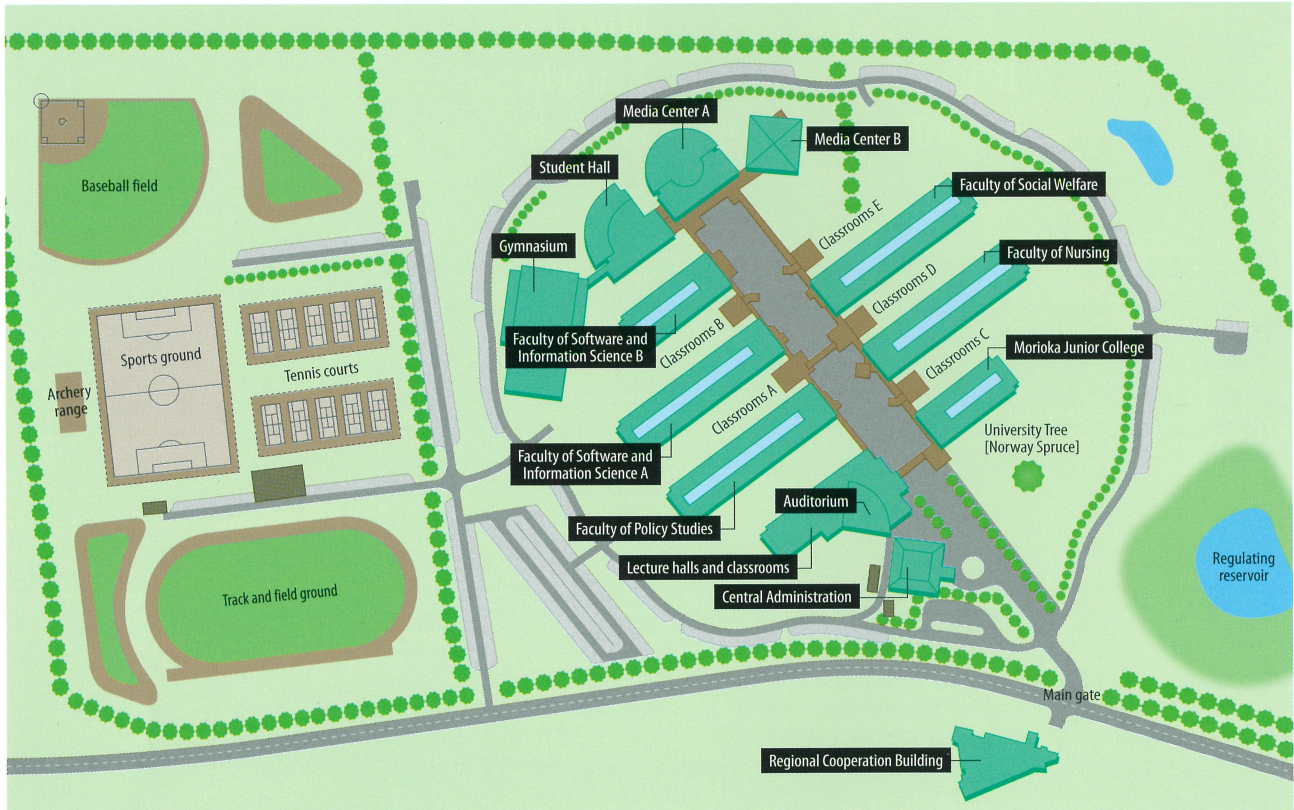
## Takizawa Campus

Faculty of Nursing / Faculty of Social Welfare / Faculty of Software and Information Science / Faculty of Policy Studies / Morioka Junior College / Center for the Advancement of Higher Education

Address: 152-52 Sugo, Takizawa-shi, Iwate-ken 020-0693, JAPAN  
Telephone: +81-19-694-2000 / Fax: +81-19-694-2001

**Regional Cooperation Building (i-MOS, Center for Regional Policy Studies)**

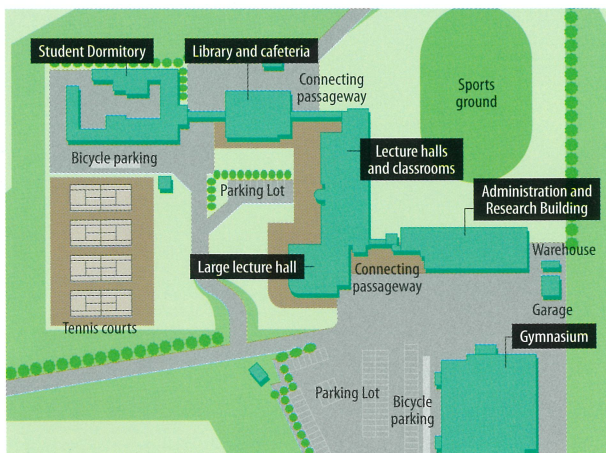
Address: 152-89 Sugo, Takizawa-shi, Iwate-ken 020-0693, JAPAN  
Telephone: +81-19-694-3330 / Fax: +81-19-694-3331



## Miyako Campus

**Miyako Junior College**

Address: 1-5-1 Kanan, Miyako-shi, Iwate-ken 027-0039, JAPAN  
Telephone: +81-193-64-2230  
Fax: +81-193-64-2234



## Aiina Campus

**Satellite Campus**

Address: 1-7-1 Morioka-eki Nishi-dori, Morioka-shi, Iwate-ken 020-0045, JAPAN  
Iwate Prefecture Citizen's Cultural Exchange Center (Aiina) 7th Floor  
Telephone: +81-19-606-1770 Fax: +81-19-606-1771



Change  
the world  
at IPU!

# 岩手県立大学

Iwate Prefectural University

## Access Guide

### By Air

- Sapporo →<Approx. 1 hr>→ Iwate-Hanamaki Airport
  - Osaka (Itami) →<Approx. 1 hr 20 min>→ Iwate-Hanamaki Airport
  - Nagoya (Komaki) →<Approx. 1 hr 10 min>→ Iwate-Hanamaki Airport
  - Fukuoka →<Approx. 1 hr 55 min>→ Iwate-Hanamaki Airport
- \* From Iwate-Hanamaki Airport to Morioka Station
- Iwate-Hanamaki Airport →<Approx. 45 min by bus>→ Morioka Station
- From Morioka Station to Iwate Prefectural University by train or bus <See map>

### JR Local Lines / Shinkansen \*Not including transfer time.

- Shin-Hakodate-Hokuto Station →<Approx. 2 hr 10 min>→ Morioka Station
- Shin-Aomori Station →<Approx. 1 hr>→ Morioka Station
- Akita Station →<Approx. 1 hr 40 min>→ Morioka Station
- Sendai Station →<Approx. 40 min>→ Morioka Station
- Yamagata Station →<Approx. 2 hr>→ Morioka Station
- Fukushima Station →<Approx. 1 hr 40 min>→ Morioka Station
- Tokyo Station →<Approx. 2 hr 15 min>→ Morioka Station

### Bus from Morioka Station to the university

- Iwate-ken Kotsu / Iwate Prefecture Northern Bus
- Board at "Morioka Station East Exit Bus Stop No. 2". Required time: Approx. 40 min. Get off at "Iwate Prefectural University".
- \* Please contact the bus companies for the latest updates.

### Train schedule for Morioka Station - Takizawa Station (nearest station)

- Iwate Galaxy Railway (IGR) Required time: Approx. 15 min
- \* There is also a shuttle bus from "Takizawa Eki-mae" to "Iwate Kenritsu Daigaku".
- \* Please confirm with the transit agency schedule before using.
- \* It is about a 15-minute walk from Takizawa Station to the university.

### By Tohoku Expressway

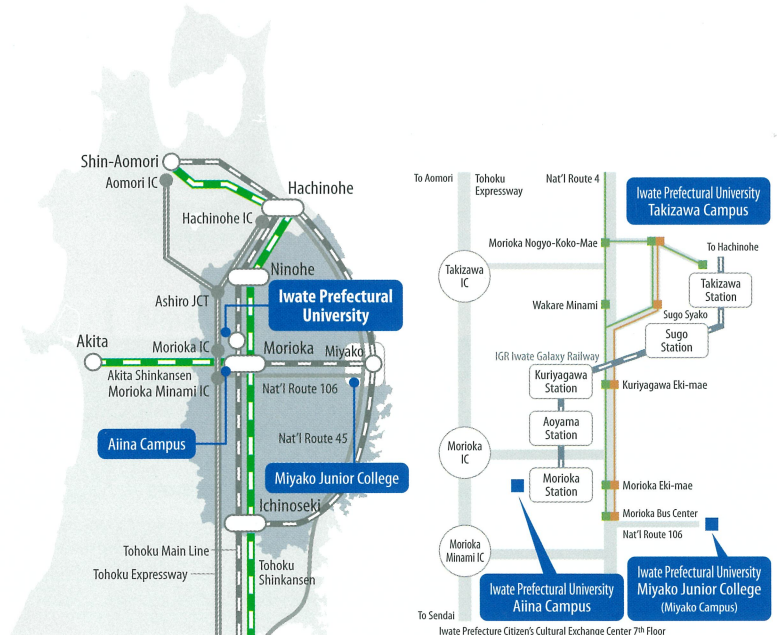
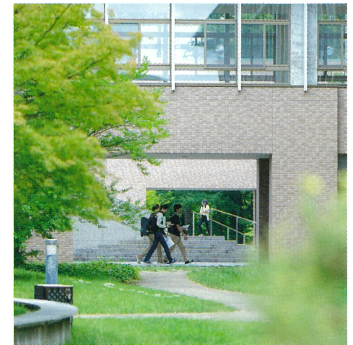
About 5 minutes from the Takizawa Interchange  
[Exit National Route 4 in the direction of Aomori and make a right turn at the second intersection]

### Route to Aiina Campus

3 minutes on foot from the West Exit of Morioka Station

### Route to Miyako Campus

- From Morioka Station to Miyako Station
- About 2 hours from Morioka to Miyako Station on the 106 Express Bus or JR Yamada Line.
- From Miyako Station to Miyako Junior College
- Take the bus going to Yagisawa-Danchi on Line #2 from the Miyako Station bus stop, get off at "Yagisawa 1-chome", and walk 10 minutes. Or, take the Sanriku Railway Kita-Rias Line from Miyako Station, get off at "Yagisawa Miyakotandai Station", and walk 15 minutes.



**Takizawa Campus**  
Address: 152-52 Sugo, Takizawa-shi, Iwate-ken 020-0693, JAPAN  
Telephone: +81-19-694-2000

**Miyako Campus**  
Address: 1-5-1 Kanan, Miyako-shi, Iwate-ken 027-0039, JAPAN  
Telephone: +81-193-64-2230

**Aiina Campus**  
Address: 1-7-1 Moriokaeki-Nishidori, Morioka-shi, Iwate-ken 020-0045, JAPAN  
Iwate Prefecture Citizen's Cultural Exchange Center (Aiina) 7th Floor  
Telephone: +81-19-606-1770

<https://www.iwate-pu.ac.jp>



Please visit our website for details

Iwate Prefectural University

Search