



岩手県立大学
Iwate Prefectural University

Iwate Prefectural University Annual Report 2020

岩手県立大学年報
令和2年度



In hopes of creating a new era of harmony among man, nature and science, we provide an education that fosters independence, knowledge and highly specialized skills which contribute to the enrichment of humanity and society.
(The Founding Principles of Iwate Prefectural University)

Iwate Prefectural University Timeline

April 1951	Iwate Prefectural Morioka Junior College is established
April 1990	Iwate Prefectural Miyako Junior College is established
April 1998	Iwate Prefectural University is established. Dr. Junichi NISHIZAWA is appointed as the first president
April 2000	Graduate schools are established Master's Program in Software and Information Science Doctoral Program in Software and Information Science Master's Program in Policy Studies
April 2002	New graduate schools are established Master's Program in Nursing Studies Master's Program in Social Welfare Studies Doctoral Program in Policy Studies
April 2004	New graduate schools are established Doctoral Program in Nursing Doctoral Program in Social Welfare
April 2005	Iwate Prefectural University becomes a public university corporation. Dr. Makoto TANIGUCHI is appointed as president First phase medium-term goals and medium-term plan period is started Iwate Prefectural University Regional Cooperative Research Center is established
April 2006	Aiina campus is established at Morioka Station West Exit The Center for Liberal Arts Education and Research is established
April 2009	Dr. Yoshihisa NAKAMURA is appointed as president.
April 2011	Second phase medium-term goals and medium-term plan period is started Iwate Monozukuri and Software Integration Technology Center (i-MOS) is established The Center for Regional Policy Studies is established
April 2013	The Center for the Advancement of Higher Education established
April 2014	The Center for Liberal Arts Education and Research is integrated into the Center for the Advancement of Higher Education
April 2015	Dr. Atsuto SUZUKI is appointed as president.
April 2017	Third phase medium-term goals and medium-term plan period is started

A university that contributes to the cultivation of creative talent in Iwate and the generation of vitality in the local community

[Education that increases the ability to make future breakthroughs]

[Contribution to the local community for future creation]

[Strong research capability as the foundation of education and contribution to the local community]

Iwate Prefectural University Annual Report 2020 Table of Contents

■ Third Mid-Term Goals/Plan and Performance Results 2020	03
■ Academic Impact Activity Status 2020	05
■ Regional Contribution Status 2020	07
■ Research Activity Status 2020	09
■ Educational Activity Status 2020	11
■ 2021 Admissions and 2020 Graduate and Employment Status	13
State of Student Enrollment for Academic Year 2021	13
Graduates and Employment Status 2020	15
■ Financial Status 2020	17
■ Organization Chart for Academic Year 2021	19
■ Administrators for Academic Year 2021	20

Iwate Prefectural University Topics - 2020 -

i w a t e p r e f e c t u r a l u n i v e r s i t y t o p i c s

Iwate Prefectural University initiatives to cope with the “WITH corona” era

Following the government policies and in light of the nationwide infection situation, our university has taken measures such as delaying the start of first semester classes and conducting online classes.

With “Education and research focused on practical sciences” as one of our fundamental directions, something that required our most careful consideration was how to conduct off-campus training programs for practical learning and the acquisition of qualifications.

Also, some other main initiatives we have taken during the COVID-19 pandemic are listed as follows.

Main initiatives during the COVID-19 pandemic

March	Cancelled commencement ceremonies (March 25, Takizawa Campus and March 18, Miyako Campus)	July	Called for donations to “The Iwate Prefectural University Future Creation Fund” Created “Iwate Prefectural University COVID-19 Response Guidelines” Held online open campus events (July 10)
April	Cancelled entrance ceremonies (April 3, Takizawa Campus and April 6, Miyako Campus) Postponed the start date of the classes twice	October	Canceled Takizawa Campus University Festival “Shufusai” (October 31 - November 1)
May	Started online classes for all subjects (May 18)	November	“Influenza Vaccination Assistance Project” (from November 19 - January 29)
June	Started face-to-face classes for all subjects (June 22) Created “Public University Corporation Iwate Prefectural University Study Support Handout Program” (Application period: 1st round: June 29 - July , 2nd round: November 2 - 16)	March 2021	Held commencement ceremonies (March 18, Takizawa Campus and March 19, Miyako Campus) *The ceremonies were held by partially changing the programs to prevent infection including measures such as limiting the number of attendees and using several venues.

Education

Practical training was held while taking precautions to prevent infection



In order to secure students' learning opportunities whilst also taking precautions to prevent infection, training programs were held by taking careful measures such as changing the training for acquiring qualifications from off-campus to on-campus and utilizing online training.

Research

Undergraduate students of the Faculty of Policy Studies conducted a COVID-19 impact survey for businesses in the prefecture

The questionnaire survey conducted by the students revealed that businesses in the prefecture which were affected by the Great East Japan Earthquake and covered by the Restoration and Maintenance Subsidy Project for Facilities of Small and Medium Enterprise Groups were facing severe financial difficulties due to the impact of the COVID-19.

This survey was conducted by 18 junior and senior students of the Faculty of Policy Studies led by Professor Tajima KUWADA as part of economics practical lessons.

Administration

Supported students with the Student Support Handout Program and “Ask Anything Consultation Service”

In order to better support students who are financially distressed and finding it difficult to study, the “Public University Corporation Iwate Prefectural University Study Support Handout Program” was created and 50,000 yen each was handed out to students who met the payment requirements.

In addition, the “Ask Anything Consultation Service” was started as a place for students to come to talk about all their troubles regarding studies as well as mental and physical anxieties.



Other

Received monetary donations as well as food and goods for students

Donations of money, food and goods to support students were received from companies in the prefecture. Also, masks and other items were contributed and generous donations to the “Future Creation Fund” were made by individuals.

(Donors and contributors (excerpt))
 ・ ICS Co., Ltd.
 ・ Shiniwate Agricultural Cooperative (JA Shiniwate)
 ・ TSUGAWA Co.,Ltd
 ・ Social welfare corporation Seijinkai

December

Held an open lecture using an “SDGs card game” at Aiina Campus

“Aiina SDGs Lecture” was held at the Aiina Campus. In the lecture in December, Professor Kotaro SHIBUYA of the Faculty of Policy Studies held a workshop utilizing the “SDGs card game”.

In this open lecture, the introductory part designed for beginners was used to raise awareness of SDGs and spread the initiative to companies and government agencies in the prefecture.



October

Volunteer group “FudoNetR” won the Iwate Governor Award

At the 73rd Iwate Prefecture Social Welfare Convention, the volunteer group “FudoNetR” was awarded the Iwate Governor Award for its great achievements.

FudoNetR was initially established in 2007 to provide support after the Niigata-oki Chuetsu Earthquake, and has since been engaged in activities such as supporting the fishing industry in Sanriku, supporting the activities of Food Bank Iwate, and holding exchange meetings for people who evacuated to inland cities.



January

Served log-grown shiitake mushroom dishes created by students at a restaurant in the Morioka Station building

With an aim to make consumers know the goodness of dried log-grown shiitake mushrooms produced in the prefecture, the Faculty of Policy Studies students made a sales promotion plan centered around cooked dishes. Morioka Junior College students were in charge of the menus using dried shiitake mushrooms and cooked dishes were served at “Minoru Dining” in the Morioka Station Building. There were three menu choices: “Stuffed log-grown shiitake with meat” , “Log-grown shiitake gratin” and “Log-grown shiitake hamburger” .



Third Mid-Term Goals/Plan

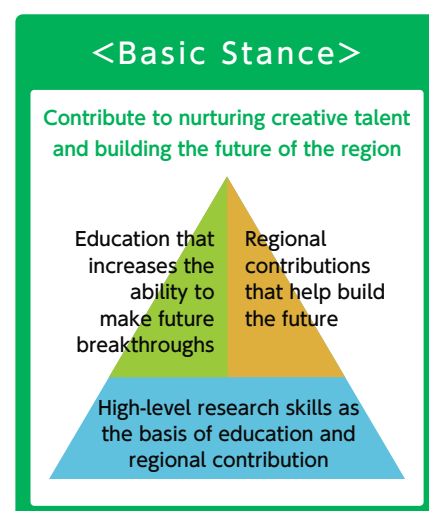
Toward becoming “a university that contributes to nurturing creative talent and building the future of the region”

As a center of learning for the future pioneers of the community, we will, as stated in our third term goals, aim to be “a university working to build the future of Iwate and cultivate its human resources” , in order to recover from the Great East Japan Earthquake and Tsunami, help to build a future for the region, and serve as a community leader for the six years between 2017 and 2022.

To realize this goal, we will strive to promote education and research activities together with regional contribution, while

responding to the changes in the social environment and regional needs. Inspired by our founding spirit of “creating a new era of harmony between nature, science, and humanity” and taking advantage of our 20th anniversary (2018) to examine the organization of our education and research in order to make any necessary reviews, we will continue working toward the goals that have been set since the foundation of our university and become “a community-based university that offers education and research focused on practical sciences”.

■ Third Mid-Term Goals ■ Points of Focus in the Third Mid-Term Plan



The Third Mid-Term Plan describes the points of focus in various fields within education, research, and regional contribution in order to achieve the mid-term goals, and these efforts are being promoted throughout the entire university.

Education

Under university-wide teaching management, nurture creative talent in Iwate according to the characteristics of each faculty

POINT

To foster the talent who will create the future of Iwate, promote enhancement of locally oriented education with Iwate as the target and active learning to encourage students' subjective learning, in collaboration with industry and the region.

Research

Strengthen research activities supporting education and contribution to the local community

POINT

Strengthen strategic research activities to support the creation of abundant local communities in Iwate in the future

Regional Contribution

Provide solutions to local problems and responds to globalization as a local hub of intelligence

POINT

Construction of support networks to understand and encourage multiculturalism and its values in order to promote globalization in Iwate

■ Major 2020 Performance Results

We received evaluation results from the Prefectural Evaluation Committee for Incorporated Administrative Agency for 45 items listed in the annual plan: AA (showing remarkable progress) for 5 items, A (progressing as planned) for 36 items and B (generally progressing as planned) for 4 items.

Specifically, we achieved good results in establishing an

assessment policy, improving financial support for students, and building a foundation for joint research with companies. On the other hand, due to the influence of COVID-19, various events were canceled and there are delays in renewal of facilities in campuses etc. and after 2021, such inconveniences will be addressed while taking measures against infection.

Education

Under university-wide teaching management, nurture creative talent in Iwate according to the characteristics of each faculty

- Formulate assessment policies for individual faculties and base education
- Implement both governmental and internal subsidy programs in light of the influence of the COVID-19
- Repair and start official operation of the student interview recording system in the Faculty of Software and Information Science
- Host an online industry study seminar “Oshigoto Exhibition” (with 191 students participating) and an internship seminar for companies (for 330 registered companies), jointly with the 'Let's Work in Iwate' Promotion Council

Research

Strengthen research activities which support education and contribute to the local community

- Provide government and company recruitment information to faculty members, support faculty members in the preparation of application documents by the support team
- Build a foundation for joint research by the conclusion of a comprehensive cooperation agreement with Morioka Terminal Building Co., Ltd., and cooperation agreements with Takizawa City and ARC Co., Ltd.
- Receive a commendation for joint research with Morioka City (Urban Research Grand Prix) “Grand Prize for Basic Policy Category”
- Promote Northern Iwate's Industry & Social Innovation Zone Project in cooperation with the prefecture

Regional Contribution

Provide solutions to local problems and respond to globalization as a local hub of intelligence

- Develop local human resources by implementing regional collaborative research (7 themes), promote strategic research projects (6 research projects), and hold advanced engineer training courses (15 courses, 136 participants) for young engineers and students
- Provide a support fund for expenses incurred during volunteer activities by faculty members and students (total of 4 groups, 47 people, 109,000 yen), and publish a summary article of reconstruction support activities entitled “Great East Japan Earthquake and Tsunami Reconstruction Support by Iwate Prefectural University” on the website for external visitors

Administrative work

Independent, self-directed management that supports education and research activities

- Under the influence of the COVID-19, hold meetings of the Crisis Management Task Force to discuss appropriate administration of the university
- Thoroughly take precautions to prevent infection in order to provide students and faculty members with a safer environment for face-to-face lessons. Hold research funding compliance workshops to raise awareness of research ethics and on-campus workshops to provide correct knowledge and education about harassment

Outline

In May 2019, our university joined the United Nations Academic Impact (hereinafter, UNAI). UNAI is a global initiative to pursue social contributions of universities with an aim to align activities of institutions of higher education around the world with the United Nations. Since our university conducts various education and research as well as community contributions related to UNAI, we participate in 4 of 10 Principles of the UNAI.

- Principle 6: A commitment to encouraging global citizenship through education
- Principle 8: A commitment to addressing issues of poverty through education
- Principle 9: A commitment to promoting sustainability through education
- Principle 10: A commitment to promoting inter-cultural dialogue and understanding, and the unlearning of intolerance, through education

[Reference] United Nations Academic Impact Japan website
These four principles are in line with the founding principles of our university.



Performance report

◆Activity report

UNAI member universities are expected to undertake activities related to at least one of the 10 Principles of the UNAI each academic year and report to the UNAI Secretariat.

◆Iwate Prefectural University Activity Report

Our university compiled an activity report on UNAI-related activities in the 2020 academic year. The Activity Report is published on our website.

From the list at the top-right corner of the homepage of the Iwate Prefectural University website, select the "International Exchange" page.



1 Children's study room run by students Volunteer Circle for Kids "Doronko-tai ☆ Mirai"

This is a volunteer circle that provides learning support for elementary and junior high school students. This circle supports children in their self-study while respecting what they want to do so that they can recognize the fun of learning. Also, it provides a cozy place where children can feel at ease.



Children's study room run by students

2 Creating momentum around volunteer activities Volunteer group "FudoNetR"

The FudoNetR was initially established as a support activity following the Niigata Chuetsu-oki Earthquake in 2007. The group values connection with local residents, and currently undertakes activities such as managing local emergency drills, supporting children's cafeterias and food banks as reconstruction support activities in areas affected by the Great East Japan Earthquake and Tsunami.



Activities of "FudoNetR"

3 International remote lessons (University of North Carolina Wilmington, USA: UNCW)/Online overseas training (Washington State University, USA: WSU)

Faculty of Nursing

Focusing on global warming and health problems in relation to SDGs Goal 13 "Climate Change", a presentation was made about measures to control "heat stroke risk" followed by an exchange of views.

Also, in relation to SDGs Goal 12 "Sustainable Consumption & Production" and 13 "Climate Change", under the theme of the relationship between water resources, the environment, and health, a presentation was made about Japan's responses and solutions followed by an exchange of views.

4 International Nursing Theory Seminar "Considering solutions for SDGs"

Faculty of Nursing

The International Nursing Theory Seminar of the Faculty of Nursing aims to enable students to develop a global perspective, take initiative in finding and tackling health and nursing issues, and to consider the role of the nursing profession. With these goals, a theme based on the United Nations Sustainable Development Goals (SDGs) was chosen and students mainly focused on group work to find solutions by looking at health aspects, which only nursing students can think of.

5 Introduction of minors: "Regional Creative Education Program" and "Global Liberal Arts Education Program"

Center for the Advancement of Higher Education

As a part of the Liberal Arts Program, our university offers the following 2 "minors".

- (1) The "Regional Development Program" is a program to learn the current state of the local community, knowledge and skills for identifying and solving issues through fieldwork and hands-on experience. Students who completed the program are awarded the title of "Specialist in Regional Development".



Regional Creative Education Program

- (2) The "International Liberal Arts Program" is a program to learn skills and knowledge including languages, to understand multiple cultures, and to think about the possibility of multicultural symbiosis and help bring it to fruition in a globalized world. Students who completed the program are awarded the title of "Specialist in International Liberal Arts".

6 Student-centered activities aimed at gender equality - Exhibition at the Iwate Gender Equality Festival -

Collaboration between the "Marble" student group and the Department of International Cultural Studies, Morioka Junior College

The Marble student group engages in activities for realizing gender equality. The group collaborated with students studying "Gender Studies" at the Department of International Cultural Studies of Morioka Junior College to exhibit panels at the "Iwate Gender Equality Festival".



Exhibition panel at the "Iwate Gender Equality Festival"

7 Efforts of Iwate Prefectural University to foster a reflective and empathetic conception of cultural understanding.

Morioka Junior College

At the Department of International Cultural Studies, with the aims of elimination of intolerance and promotion of cross-cultural understanding, students are given learning experiences which encourage them to view cultural behaviors not as "right" and "wrong" or "normal" and "abnormal", but to build a more nuanced and empathetic approach to thinking about different opinions and cultural behaviors from various perspectives.

8 Promoting Principle 10 with the Pyramid of Cultural Perspective.

Morioka Junior College

At the Department of International Cultural Studies, for the UNAI's Principle 10 of "A commitment to promoting inter-cultural dialogue and understanding, and the unlearning of intolerance, through education", we provide a learning environment in which students are encouraged to reflect on the nature of culture and diversity across a wide spectrum from universal to personal. This helps them to build up a richer image of cultural understanding and give them an empathetic mindset to serve as a valuable tool against the manifestation of intolerance.

9 Research on the Development of a Study Method of Coastal Marine Debris such as Marine Plastics with the Participation of Citizens

Faculty of Policy Studies, Faculty of Software and Information Science
(Collaboration with the Resource Recycling Promotion Section, Department of Environment and Residential Life, Iwate Prefecture)

As a measure against marine plastic waste, in order to grasp the situation of marine debris on the coast of Iwate Prefecture, a smartphone-based information system to enable citizen's research of coastal marine debris was developed. Also, an environmental education program for elementary schools along the coast of Iwate Prefecture was conducted.



Scenes of the environmental education program



Coastal marine debris survey locations

Aiming to be a university that creates new value and contributes to the future of the community

Promotion of Northern Iwate's Industry & Social Innovation Zone Project

In our effort to promote “contribution to the local community for future creation”, on April 11, 2019, a “Cooperation agreement for finding solutions to local issues and promoting industry of Northern Iwate” was concluded with Iwate Prefecture and co-promotion of the “Northern Iwate's Industry & Social Innovation Zone Project” listed in Iwate Prefectural Citizens' Plan (2019 to 2028) was decided as a focus. We established “Northern Iwate's Industry & Social Innovation Zone Project Promotion Center” (Director of Research and Regional Collaboration Office serves as the Center Manager) at our Research and Regional Cooperation Head Office where we work on surveys, research, human resource development, etc. for finding solutions to local issues and promote industry in Northern Iwate.

In 2020, in addition to joint research with Iwate Prefecture and commissioned research, we are engaging in research in northern Iwate funded by a new Iwate Prefectural University grant. At the same time, in order to develop local contributors for the future of northern Iwate, we have visited schools to deliver on-site lectures for junior and senior high school students. At the symposium held online in March, in addition to disseminating information about the status of these efforts, a panel discussion was held to discuss our university's role in human resource development in northern Iwate, and opinions were exchanged with stakeholders regarding expectations and future prospects for our university.



Panel discussion at the symposium



Delivered on-site lectures at Iwate Prefectural Ichinohe High School

Promotion of research at the Center for Regional Policy Studies and support for municipalities

With “education and research that focuses on practical aspects” as one of our fundamental directions, our university established the Center for Regional Policy Studies in 2011 to strengthen our function as the think-tank of the prefecture. At the Center, tackling the problems and needs of citizens in the prefecture with local perspectives, researchers specializing in various fields work in collaboration with municipalities, NPOs, and businesses to find solutions to local issues and support community revitalization in municipalities.

In 2020, the joint research conducted at “Morioka City Machizukuri Research Institute” established jointly with Morioka City, won the Grand Prize for the 11th Urban Research Grand Prix (CR-1 Grand Prix).

●Promotion of Regional Collaborative Research

At our university, we have received proposals from various organizations within the community such as municipalities, NPOs, and businesses, and are working with these organizations on collaborative research projects to solve local issues. We have developed research activities tailored to each issue and need. As part of this we have created “Stage I”

(research period: one year) to assist in formulating a problem-solving plan, and “Stage II” (research period: two years) to support activities that apply the results of the research to solve various problems. In 2020, we conducted research on 32 issues in Stage I and 7 issues in Stage II.

●Support for community revitalization in municipalities

Our university has supported community revitalization in municipalities since 2015, formulating and promoting comprehensive strategies for communities, people, and jobs, and supporting the improvement of abilities of municipal employees to realize policies for regional revitalization. In 2020, we dispatched faculty members as committee members to expert meetings in 20 municipalities. For 6 among the 20 municipalities, we also provided guidance and advice for projects listed in the comprehensive strategies. In addition, for 4 municipalities, we provided assistance for their consultation service related to legal work and policy-making and helped in their training programs.

Hosting lectures such as public lectures

The public lectures at the Takizawa Campus hosted every summer were canceled due to the influence of the COVID-19. However, to offer a place for learning to the citizens of the prefecture and also as a part of giving back the results of research to society, the contents of the public lectures from the previous year were broadcasted as a special cable TV program, which was also released on a video sharing website. Making use of individual specialties, faculties held a variety of lectures at the Aiina Campus, and in 2020, 1,201 people participated in a total of 71 lectures.

In addition, 15 advanced engineer training seminars were

held to train young engineers and students. The theme was advanced technologies indispensable for high-value-added and high-efficiency manufacturing, and there were 136 participants.



Training Seminar

A Ruby programming class

In order to help improve ICT utilization skills and develop the problem-solving abilities of school children and students, we held a Ruby programming class for members of the Science and Technology Club of Takizawa City Takizawa Daini Junior High School. Making use of the results of the programming class, the club applied for the Game division of the “2020 International Ruby Programming Contest for Junior and Senior High School Students in Mitaka”, and two works passed the first screening. At the final screening held in March, one of them won the excellence award, which is equivalent to the second prize.



A Ruby programming class

◆Promotion of strategic research project

Aiming at acquiring large-scale, internal and external collaborative interdisciplinary research funds, the “Research Representing our University Project” was created in July 2018. In 2020, 6 ongoing research teams worked on their research projects in order to promote research that takes advantage of the university's unique characteristics, contribute to the revitalization of Iwate's industry and economy, improve of the standard of living, and create innovation in the prefecture.

◆Promotion of research through university-wide competitive research grants

In 2017, we created research grants to support research that aims to acquire large-scale, internal and external collaborative interdisciplinary research funds in the future. Placing priority on the themes of “Earthquake recovery”, “measures against population decline”, “regional industry promotion”, and “development of interdisciplinary fields”, 7 themes were adopted in 2020.

◆Acquisition status of external research funds

In 2021, out of 106 applications for Grant-in-Aid for Scientific Research, 18 were accepted, which made the acceptance rate 17% (21% in the previous year). The total number of joint research, commissioned research, and scholarship endowment in 2020 was 53 (a decrease of 9 cases from the previous year) and the total grant amount was 60,143,000 yen (41,880,000 yen lower from the previous year).

◆Effort of Nursing Practice Research Center

In order to contribute to improving the quality of life of the citizens of the prefecture and the quality of nursing in Iwate, we provide ongoing education for the nursing profession. In 2020, there were 90 participants from 34 institutions in the “Iwate Prefecture New Nursing Staff Training” and 184 participants in 8 types of the “Professional Training Project” that utilized the expertise of each teacher. In addition, we provided “research guidance” at 10 institutions by visiting hospitals in the prefecture and serving as lecturers.

This year was the 10th year for the university to host the Iwate Prefecture New Nursing Staff Training sessions since the program was established in 2011. Before starting the training, there was concern about continuing the event due to the influence of COVID-19, however, in response to the strong needs of hospitals, we conducted the training online.

The Center's efforts to hold the training in spite of COVID-19 were highly appreciated by the the nursing departments of hospitals and the sessions received high evaluation scores from participants.



Iwate Prefecture New Nursing Staff Training was held online

Status of research activities in the 2020 academic year

Regional collaborative research

Regional collaborative research entails collaborative work conducted by local organizations and faculty members of our university to find solutions to local issues. As an activity of the Center for Regional Policy Studies, regional collaborative research was established in 2012. Including projects proposed by faculty members and community, the number of research projects to date exceeds 300.

From 2017, we changed the research grant system as explained below as a mechanism to deliver research results to the local community as early as possible.

[Stage I] Stage for formulating a plan for finding solutions to issues

Supports research projects to formulate measures to solve local issues.

Research fund: Upper limit of 300,000 yen per project (research period: one year)

[Stage II] Research results implementation stage

Supports activities that utilize the results of the University's research to find solutions to local issues.

Research fund: Upper limit of 1,000,000 yen per project (research period: 2 years)

<Stage I: Stage for formulating a plan for finding solutions to issues>

Faculty of Nursing:	1 research project
Faculty of Social Welfare:	4 research projects
Faculty of Software and Information Science:	5 research projects
Faculty of Policy Studies:	14 research projects
Morioka Junior College:	3 research projects
Miyako Junior College:	4 research projects
Center for the Advancement of Higher Education:	1 research project

<Stage II: Research results implementation stage>

7 research projects

Click here for details



Regional collaborative research page on the Iwate Prefectural University website

Grant-in-Aid for Scientific Research Programs

Grants-in-Aid for Scientific Research Programs (KAKENHI/Grant-in-Aid for Scientific Research) are competitive research funds that are intended to significantly develop all scientific research (research based on the researcher's passion projects), from basic to applied research in all fields, ranging from the humanities and the social sciences to the natural sciences. The grants provide financial support for creative and pioneering research projects which are selected using a peer-review screening process.

Our university engages in activities to improve acceptance rates, such as establishing a support system for the preparation of applications.

Faculty of Nursing:	12 research projects
Faculty of Social Welfare:	14 research projects
Faculty of Software and Information Science:	18 research projects
Faculty of Policy Studies:	10 research projects
Morioka Junior College:	2 research projects
Miyako Junior College:	2 research projects
Center for the Advancement of Higher Education:	5 research projects
Research and Regional Cooperation Head Office:	4 research projects

Click here for details



Search by entering "Iwate Prefectural University" in the "Research Institute" database of the Grant-in-Aid for Scientific Research Programs.

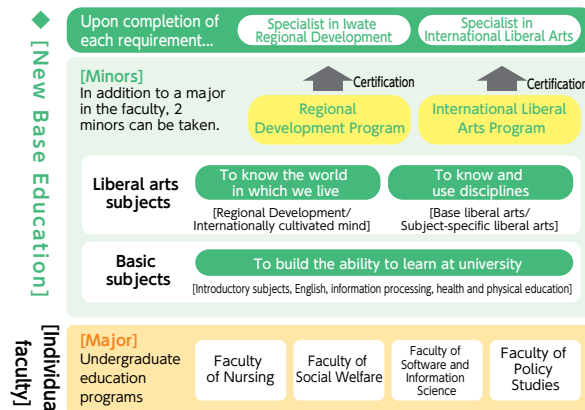
■ “Glocal” learning through two minors

Base education subjects and minors

In the academic year of 2020, minor education was also renewed as the base education curriculum was renewed in our effort to further pursue the realization of the goal of “contribution to the international community” which is equally valued alongside “contribution to the local community” in the founding principles of our university.

A minor is a learning system that goes beyond the boundaries of faculties, where students learn knowledge of other fields while making the most of the expertise of individual faculties. In 2016, we newly established a minor in the “Iwate Regional Development Program” and students who satisfied the requirements for completion were awarded the “Specialist in Iwate Regional Development” title. In 2018, 4 students earned the title of a “Specialist in Iwate Regional Developments” , followed by 11 students in 2019, and 6 students in 2020. So far, a total of 21 students have been awarded the “Specialist in Iwate Regional Development” title.

Then, from academic year 2020, 2 minors have been made available for students to understand the world from “local” and “global” viewpoints and to systematically learn practical ideas. Through these 2 minors, we will develop global and local learning to get to know Iwate and connect with the world.



The start of a new International Liberal Arts Program Minor Program



Introduction to Global Studies

In academic year 2020, a new minor, the “International Liberal Arts Program” was started. This program aims to foster a multifaceted understanding of an increasingly globalizing world and the ability to engage with that world. Students who have satisfied the requirements for completion can be awarded the “Specialist in International Liberal Arts” title.

In “Introduction to Global Studies” which was newly developed as a core subject of the minor, lectures were given by people who are globally active in various real fields. Among such lecturers, based on the experiences gained from filmmaking work overseas, Mr. Keishi Otomo, a film director from Morioka City, talked about global issues that can only be perceived through the lens of local viewpoints, as well as how communication can take place.

After the academic year of 2021, new courses have been made available. In these courses, students can acquire multiple languages and learn about the international community and cultures from various perspectives, and in some courses, take part in overseas trainings.

Changing minor programs from the “Iwate Regional Development Program” to the “Regional Development Program”

In the academic year of 2020, the name of the “Iwate Regional Development Program” minor was changed to the “Regional Development Program” , and at the same time, the name of the title awarded to students who complete the program was changed from “Specialist in Iwate Regional Development” to “Specialist in Regional Development” . Also, “Iwate Regional Development Studies I” and “Iwate Regional Development Studies II” , where students plan and practice fieldwork while building a strong a connection with the community, were positioned as compulsory subjects in this minor. At the same time, the number of credits required for completion was changed from 12 to 16 credits to strengthen the content of this minor. In addition, a “Regional Liberal Arts Rubric” with which students in this minor conduct self-assessment of their achievements at the end of each semester, was newly developed and the operation was started.

Over the last few years, students are becoming more aware of these minors, and the number of students who wish to take these programs is also increasing. In the future, we will consider how to cooperate with students, graduates, and those employed locally, who have been awarded “Specialist in Iwate Regional Development” title.



Fieldwork of Iwate Regional Development Studies I and II

■ Development of Mutual Learning Culture Creation Project

Our university is working to organize a learning environment within the campus where students are encouraged to learn on their own initiative. We provide students with various learning opportunities, encourage students to change their learning attitude from “just doing classes and assignments given” in high school days to “learning on their own initiative” in their undergraduate studies, and aim to develop a “mutual learning” culture at the university where students of different grades and different faculties can learn from each other.

In 2020, a collaboration project between Library Attendants (LA)* and faculty members, the “Mutual Learning Cafe” event, was held twice and students deepened their learning through mutual dialogue. The topics were “What is the meaning of work?” and “COVID19 and human relations” and opinions were exchanged freely with the discussion being led by faculty member facilitators.

After trial operation in the previous year, the English conversation meetup event “English Time” was scheduled to move to full scale operation from the academic year of 2020, however, it was postponed due to the influence of COVID19 and was held from the second

semester. By changing the implementation method from face-to-face to online and concurrently holding the event at the Takizawa Campus and Miyako Campus, cross-campus exchanges between students with the same purpose could be realized.

In addition, in order to encourage exchanges between international students and Japanese students, in the “Multipurpose Space Kazenomonto” corner, which is located next to the library, a space called “Cultural Exchange Space Stella,” was created and students are able to get together freely. Although it is a small space, students can freely look at materials related to language learning and study abroad, and they also use it for purposes such as multicultural understanding, language group learning, and international exchange events.

* Library attendant (LA) = student staff members who provide library usage guidance and special exhibitions



LA event “Mutual Learning Cafe”



English conversation meetup event “English Time”



Cultural Exchange Space Stella

■ Creation of an overseas study support subsidy program

Our university has a variety of “study abroad programs” with the aim of improving language skills, fostering an international way of thinking and increasing motivation to study through cross-cultural experiences, and promoting exchanges with overseas universities. Although traveling abroad is still difficult due to the influence of the COVID-19, we provide new forms of learning by utilizing online measures as much as possible.

In the academic year of 2020, the Iwate Prefectural University Overseas Study Support Subsidy Program was created. By granting subsidies to students who have difficulties participating in the overseas study program due to financial reasons, we provide support so that more students can participate in the program.

Name of programs		Schedule		Destinations		
[All Faculties] Short-term Overseas Training Program China Course	Summer	About 2 weeks	China		Communication University of China	
[All Faculties] Short-term Overseas Training Program Korea Course		About 3 weeks	Korea		Kyung Hee University	
[All Faculties] Short-term Overseas Training Program Spain Course	Spring	About 2 - 3 weeks	Spain		University of Alcalá	
[Graduate School of Software and Information Science] International Research Exchange	Summer	About 2 weeks	America/Europe		Partner universities such as University of Applied Sciences Upper Austria	
[University Faculties] Language Training I	Spring	About 3 weeks	America		Ohio Program of Intensive English - Ohio University	
[Faculty of Nursing] International Nursing Theory Exercise	Spring	About 2 weeks	America		Washington State University	
[Faculty of Social Welfare] Community Welfare Service Training	Summer	About 1 week	Korea		Welfare facilities etc.	
[Faculty of Social Welfare] New Zealand Training	Spring	About 1 week	New Zealand		Child welfare facilities, schools, etc.	
[Faculty of Policy Studies] Dispatching to Kasetsart University	Spring	About 10 days	Thailand		Kasetsart University	
[Morioka Junior College] International Culture Understanding Exercise I/II Korea Course	Summer	About 3 weeks	Korea		Kyung Hee University	
[Morioka Junior College] International Culture Understanding Exercise I/II USA Course	Summer	About 3 weeks	America		Ohio Program of Intensive English - Ohio University	

State of Student Enrollment for Academic Year 2021

Iwate Prefectural University recruits students using diverse selection criteria that are based on our Admission Policy.

Admissions for 2021 included general admissions, comprehensive admissions, admission through recommendation, and adult admissions, with the actual pass rate across the four faculties at 2.8 (0.2 decrease from the previous year), 1.1 at the graduate school (0.1

increase from the previous year), 1.3 at Morioka Junior College (0.1 decrease from the previous year), and 1.5 at Miyako Junior College (0.4 increase from the previous year).

Our university strives to improve our admission system by working to secure applicants through collaboration with high schools as well as announcing admissions.

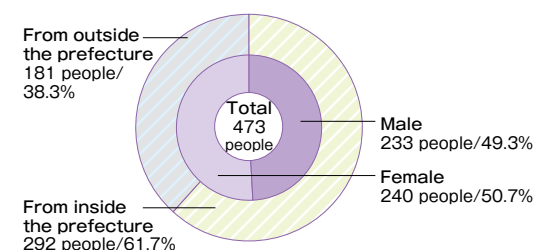
Admission Results for 2021

(Unit: No. of people, rate)

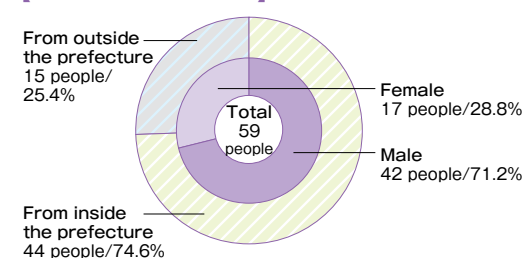
Faculty	Number of recruits	Number of applicants	Number of candidates	Number of successful applicants	Actual pass rate
Faculty of Nursing	90	405	230	97	2.4
Faculty of Social Welfare	90	413	306	113	2.7
Department of Social Welfare	50	209	153	63	2.4
Department of Human Welfare	40	204	153	50	3.1
Faculty of Software and Information Science	160	876	612	172	3.6
Faculty of Policy Studies	100	290	231	116	2.0
Total	440	1,984	1,379	498	2.8
Faculty (Transfers)	Number of recruits	Number of applicants	Number of candidates	Number of successful applicants	Actual pass rate
Faculty of Nursing	10	6	6	2	3.0
Faculty of Social Welfare	10	13	13	9	1.4
Department of Social Welfare	5	6	6	3	2.0
Department of Human Welfare	5	7	7	6	1.2
Faculty of Software and Information Science	10	22	21	13	1.6
Faculty of Policy Studies	10	34	32	13	2.5
Total	40	75	72	37	1.9
Graduate school	Number of recruits	Number of applicants	Number of candidates	Number of successful applicants	Actual pass rate
Graduate School of Nursing Studies, Division of Nursing Studies	13	5	5	5	1.0
Graduate School of Social Welfare, Division of Social Welfare	18	13	13	9	1.4
Graduate School of Software and Information Science, Division of Software and Information Science	50	46	45	43	1.0
Graduate School of Policy Studies, Division of Policy Studies	13	5	4	4	1.0
Total	94	66	64	58	1.1
Morioka Junior College	Number of recruits	Number of applicants	Number of candidates	Number of successful applicants	Actual pass rate
Department of Home Economics	50	112	106	80	1.3
Division of Lifestyle Design	25	53	51	39	1.3
Division of Dietary Nutrition	25	59	55	41	1.3
Department of International Studies	50	135	129	95	1.4
Total	100	247	235	175	1.3
Miyako Junior College	Number of recruits	Number of applicants	Number of candidates	Number of successful applicants	Actual pass rate
Department of Management Informatics	100	217	208	138	1.5

(Note) Actual Pass Rate = Number of entrance exam takers ÷ number of people who pass

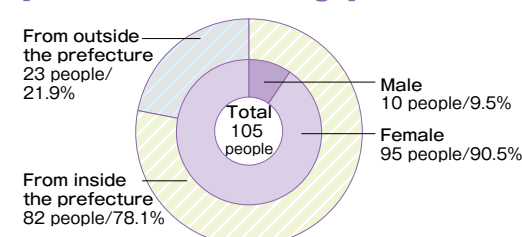
Breakdown of 2021 Admissions [Faculty]



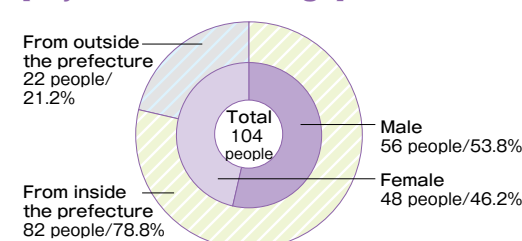
[Graduate school]



[Morioka Junior College]



[Miyako Junior College]



Efforts toward high school and university collaboration

Our university has developed a variety of collaborative projects with high schools to promote mutual understanding between high schools and the university and to provide opportunities for willing high school students to experience university education.

In addition to the Open Campus, in terms of opportunities to experience university education, there are dispatched lectures to high schools, university summer seminars and winter sessions held at the university, as well as admission consultation sessions with parents and guardians. We also accept university tours from high schools as requested and provide briefing sessions and campus tours.

At these university tours and briefing sessions, Campus Attendants (a student-run university public relations organization) present their own experiences and conduct campus tours. The opportunity to listen to real opinions of

university students are highly popular among participants.

In the academic year of 2020, to prevent the spread of COVID-19, the Open Campus, as well as some admission consultation sessions, were held online.

In addition, in order to enhance collaboration with high schools, we hold a discussion meeting with the Association of Iwate Prefecture High School Principals, the high school/university connection committee, as well as briefing sessions for high school teachers who are in charge of career counseling to provide information about our university and collect opinions and requests for our university from high schools.

Other than the above, we hold events for improving the writing skills of high school students such as an essay contest for high school students in the prefecture.

Information session for high school teachers

Our university holds information sessions and campus visits for high school teachers so that teachers who are actually teaching high school students can acquire better knowledge of the attractiveness and characteristics of the university and use that knowledge for their career counseling.

The university also holds briefing sessions that provide an overview of the university, individual faculties, and admissions, and student experience presentations and Campus Visits by Campus Attendants, which have been well received by participants to be very helpful for understanding the characteristics of individual faculties and departments as well as changes in the admissions process.



Briefing session for high school teachers

Iwate High School Student Essay Contest

For the admission examinations of our university, many faculties and admission examination criteria require essays. Iwate High School Student Essay Contest has been held every year for high school Iwate students to become aware of problems and issues in the prefecture and acquire abilities for understanding, logical thinking, originality of viewpoint and expressiveness through writing essays.

Essays on the selected theme for each year are solicited, and winners of first prize, second prize, fine work award, and school award are selected and the results and essays are published on our website.

The theme for 2020 contest was "Happiness" and we received 401 essays.



Contest poster

Graduates and Employment Status 2020

There were 454 graduates from the university in 2020, 51 who completed graduate school, 100 from Morioka Junior College, and 98 from Miyako Junior College, for a total of 703 graduates.

As for the future path for these graduates, at the university, 390 were employed (161 inside the prefecture and 229 outside the prefecture), 39 went on to higher education, and 12 fell into the category of "other". At Morioka Junior College, 62

were employed (45 inside the prefecture and 17 outside the prefecture), 30 went on to higher education, and 3 fell into the category of "other". At Miyako Junior College, 53 were employed (33 inside the prefecture and 20 outside the prefecture), 31 went on to higher education, and 7 fell into the category of "other".

The employment rate was 96.8% at the university, 92.5% at Morioka Junior College, and 88.3% at Miyako Junior College.

2020 Graduate Status

Number of graduates for March 2021 (unit: no. of people)

Faculty	Faculty of Nursing	Faculty of Social Welfare	Faculty of Software and Information Science	Faculty of Policy Studies	Total
Graduates	89	103	152	110	454
Job seekers	86 (96.6)	97 (94.2)	117 (77.0)	103 (93.6)	403 (88.8)
Number of graduates employed (inside the prefecture)	86 (39)	97 (54)	109 (18)	98 (50)	390 (161)
Employment rate	100%	100%	93.2%	95.1%	96.8%
Graduates continuing education	2	5	31	1	39
Other	1	1	4	6	12

Graduate school graduates	Graduate School of Nursing		Graduate School of Social Welfare		Graduate School of Software and Information Science		Graduate School of Policy Studies		Total
	Master's Program	Doctoral Program	Master's Program	Doctoral Program	Master's Program	Doctoral Program	Master's Program	Doctoral Program	
	0	4	7	1	26	3	10	0	51

Junior College	Morioka Junior College	Miyako Junior College
Graduates	100	98
Job seekers	67 (67.0)	60 (61.2)
Number of graduates employed (inside the prefecture)	62 (45)	53 (33)
Employment rate	92.5%	88.3%
Graduates continuing education	30	31
Other	3	7

(Note) The numbers in parentheses in the Job seekers column are the ratio of Job seekers to graduates.

(Note) Employment Rate is the rate of employment among job seekers, and who had received a job offer as of March 31, 2021.

(Note) Others include those who help at home, those who are preparing for the next step in higher education or to study abroad, and those who are preparing for employment.

Efforts toward improving employment potentials

At our university, we hold industry study seminars for the purpose of encouraging students to discover the attractiveness and charm of companies of jobs in the prefecture and think about their careers and the meaning of working at an early stage.

In 2020, the seminar was co-sponsored by the Let's work in Iwate Promotion Council. 15 companies in the prefecture joined the seminar online, and a total of 191 students participated in the seminar from Takizawa Campus and Miyako Campus.

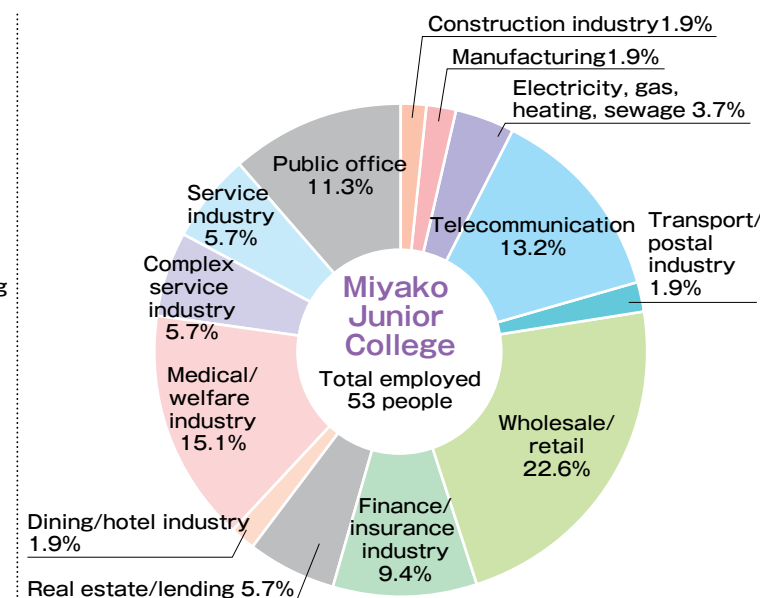
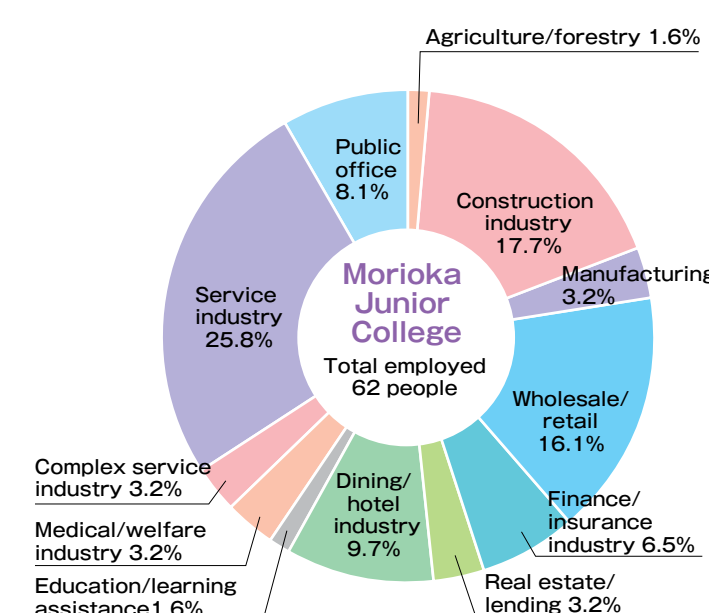
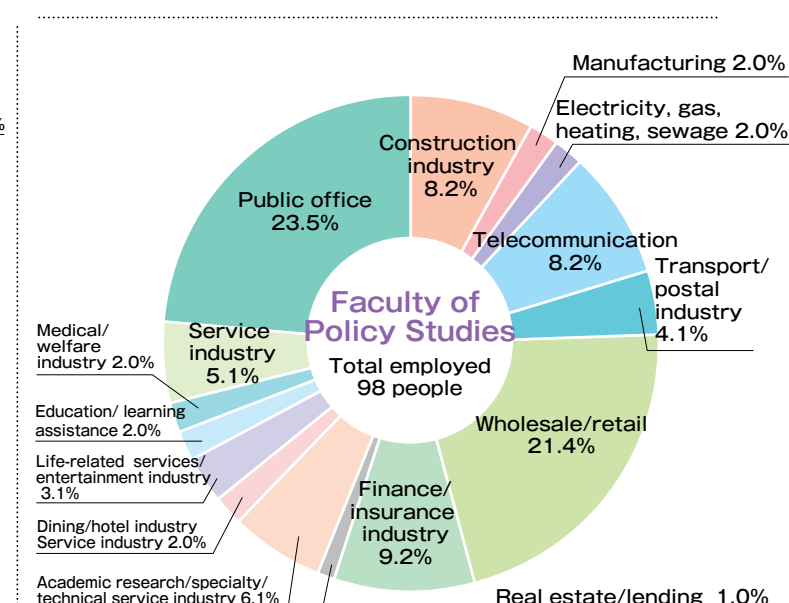
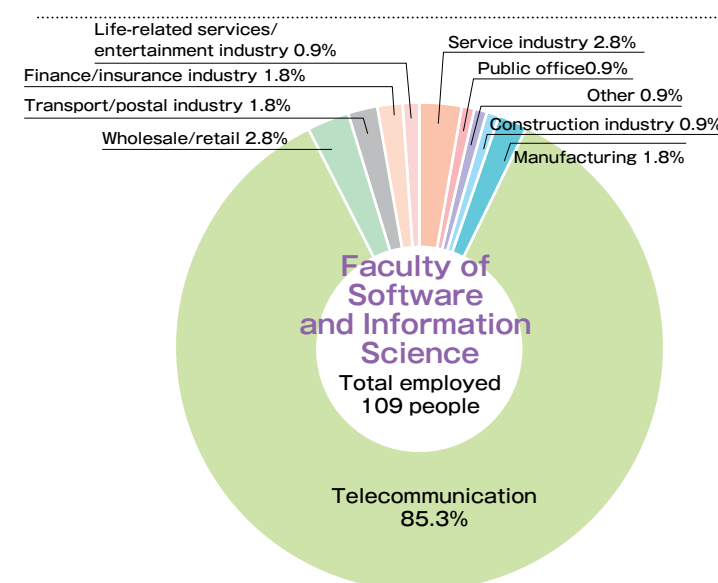
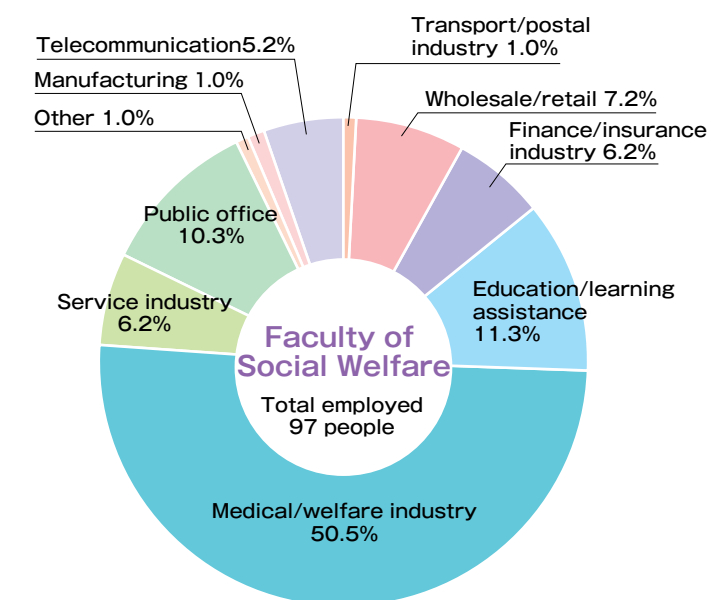
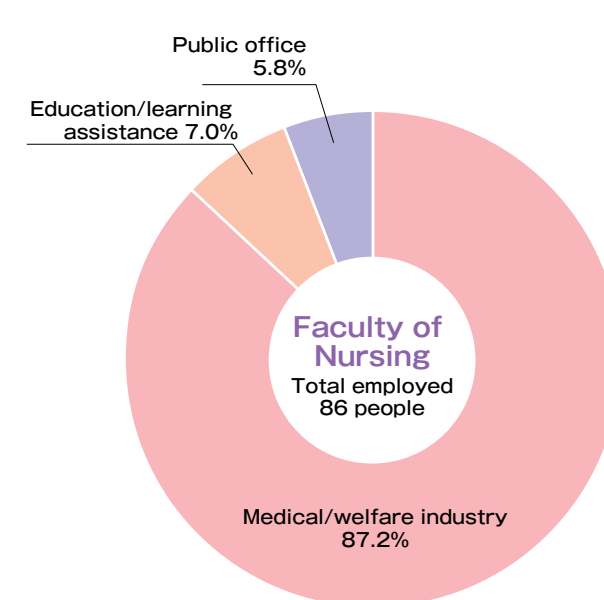
At the industry study seminar, students were given advice from graduates working for companies in the prefecture, etc., and they also asked questions. Through interactions with working people, qualities such as a sense of professionalism, business etiquette practice, and clarification of selection criteria of jobs are to be improved.

Also, at our university, we newly created a unique "Job hunting roadmap" which specifies required skills for students' job hunting activities to encourage their autonomous job hunting activities.



Industry study seminar scene (December 2, 2020)

Main employment destinations for 2020 graduates

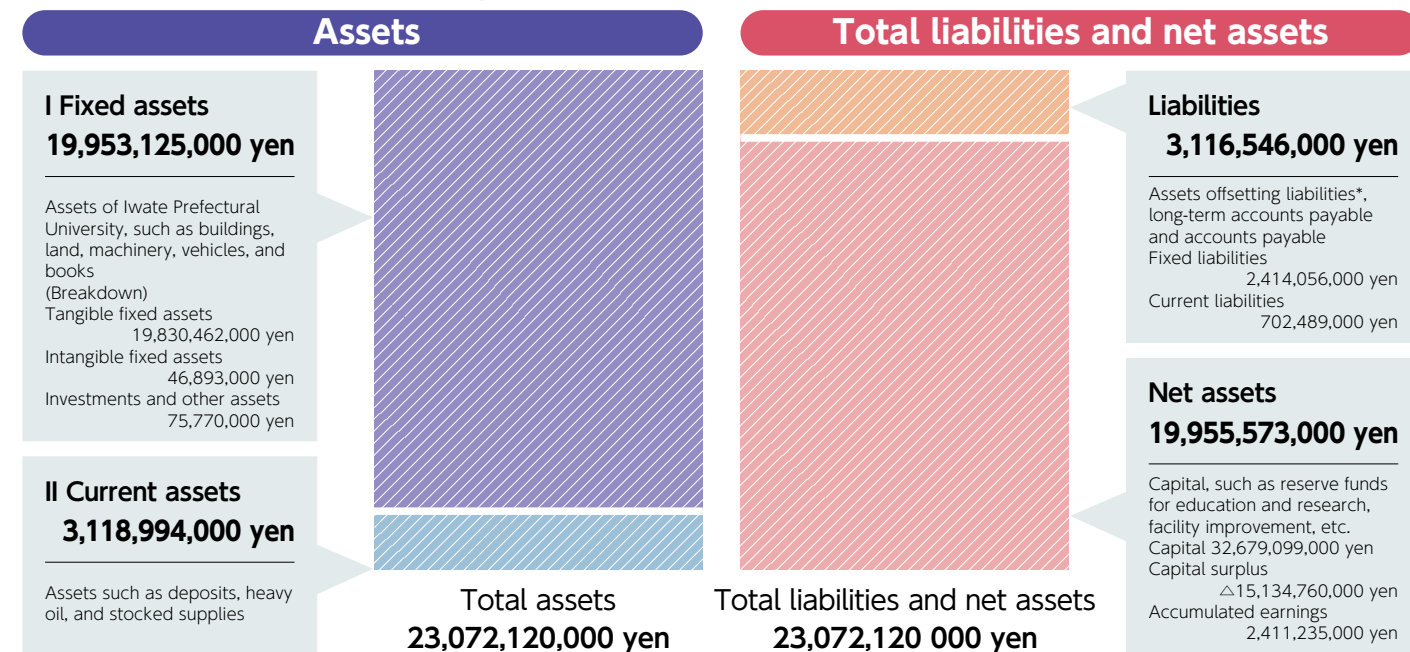


Acquiring diverse funds and effective university administration

Continuing from the previous year, in 2020, other than attempting to acquire competitive funding, commissioned research grants, and joint research funds, we also actively used government subsidies and commissioned projects to implement various strategies, such as collaborative local research projects between industry and academia, student employment support projects, and next-generation human resource development projects. In addition, we strove to review and

prioritize the content of projects and reduce expenses by improving administration efficiency, and also endeavored to enhance and strengthen our education and research activities by setting up a "Framework for President" using this year's reserve funds, and by systematically allocating the budget toward projects that contribute to the improvement of education quality.

Iwate Prefectural University Financial Situation (As of March 31, 2021)



* Assets offsetting liabilities is a special measure for public university corporations, used so that depreciation does not affect the calculation of profits and losses; when fixed assets are acquired, an amount equivalent to these assets will be calculated as liabilities, and whenever expenses are incurred from depreciation, the amount will be reversed to income. (Note) Total amounts may not match due to rounding.

2020 Balance Sheet (Revenue)

Around 62.4% of Iwate Prefectural University revenue comes from operational grants from Iwate Prefecture. The ratio of tuition fees, enrollment fees, testing fees, and revenue from research done in collaboration with industry and academia to the autonomous financial resources excluding return of asset offsetting liability is 35.0%.

Items	Amount (thousands of yen)	Percentage (%)	Notes
Grants for operational expenses	3,780,907	62.4	Things granted as operation expenses by the prefecture
Tuition	1,213,717	20.0	University's own income (self-financing)
Entrance fees and examination fees	233,067	3.8	
Research revenue from cooperation between industry and academia	39,690	0.7	Revenue from research and projects commissioned by businesses or organizations
Subsidies	374,785	6.2	Subsidies for maintaining facilities, endowments, etc.
Endowments	14,402	0.2	
Return of assets offsetting liabilities	156,115	2.6	
Other	91,489	1.5	
Reversal of reserves	156,696	2.6	
Total (A)	6,060,874		

*Return of assets offsetting liabilities is the monetized asset depreciation value from asset offsetting liabilities.
(Note) Total amounts may not match due to rounding.

2020 Balance Sheet (Expenditures)

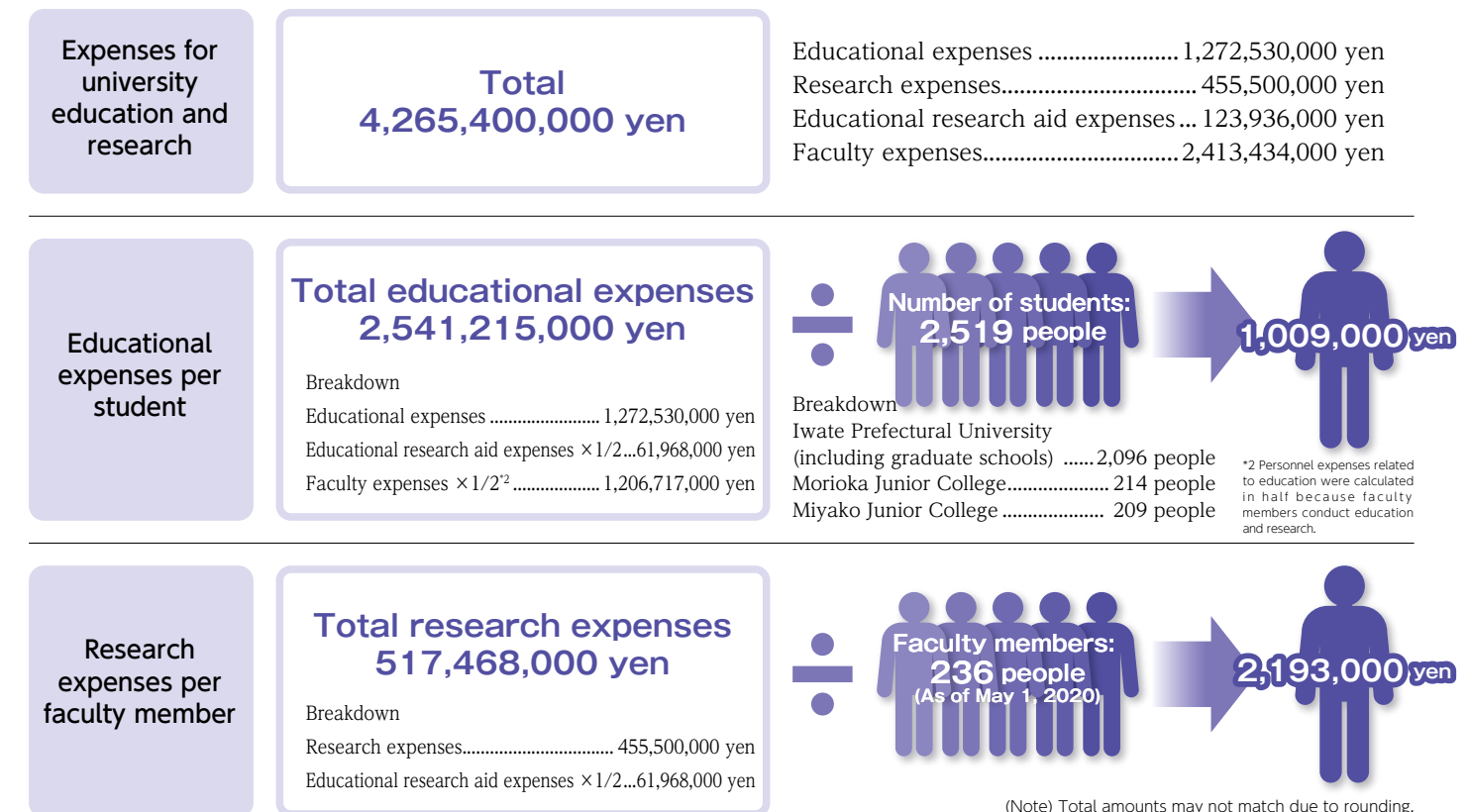
32.8% of expenditures were for expenses involved in education and research.

Items	Amount (thousands of yen)	Percentage (%)	Notes
Educational expenses	1,272,530	22.5	
Research expenses	455,500	8.1	Expenses related to university education and research
Educational research aid expenses	123,936	2.2	
Research expenses from cooperation between industry and academia	38,553	0.7	Expenses for research and projects commissioned by businesses or organizations
Director expenses	15,955	0.3	Expenses for executives, faculty members, part-time lecturers, staff, and other personnel
Faculty expenses	2,413,434	42.7	
Staff expenses	832,265	14.7	
General administrative expenses	495,540	8.8	Utilities, repairs, consumable goods
Total (B)	5,647,721		

Cost per student and faculty member (2020)

Expenses for university education and research in 2020 totaled 5,647,720,000 yen for the Iwate Prefectural University as a whole. Educational expenses per student was about 1,010,000 yen, which includes educational expenses, educational research aid expenses, and

partial faculty expenses. Also, the research expenses per faculty member was about 2,200,000 yen.



column

The Iwate Prefectural University Future Creation Fund

Taking the opportunity of 20th anniversary of our opening, the university created the Iwate Prefectural University Creation Fund in April 2016 as a financial resource to further enhance education and research activities and stabilize the operation of the university.

This fund is funded by donations from individuals, corporations, and organizations (1,000 yen per entry) and through the revenues obtained from the operation profits, which are allocated to the following projects.

- Projects required for enhancing educational and research activities
- Support projects for students and international students
- Projects required for promoting activities involved in Industry-Academia-Government collaboration as well as contribution to local communities and society.
- Projects required for aiding in areas afflicted by disaster
- Projects required for improving facilities and enhancing university administration

The donations received so far have been used to enhance athletic

equipment on campus and to install outdoor lights on the premises, among other things.

As a community-based university, we hope to continue using this fund to further advance our contributions to the community and foster local talent who will contribute to the building the future of Iwate, and would like to ask for your support.



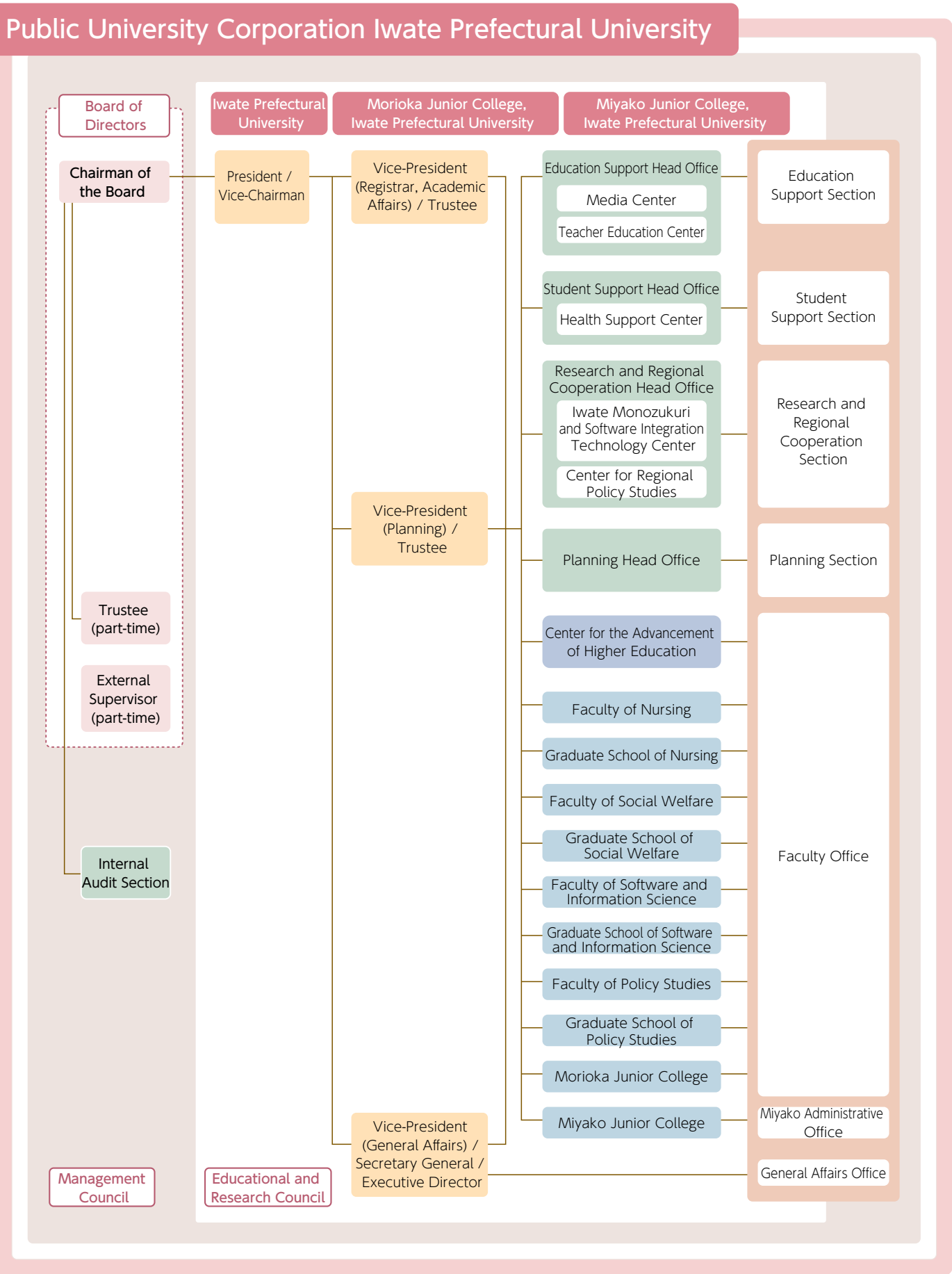
Treadmill installed in the training room



Outdoor lights installed on the premises

2020 Annual Balance (A-B) 413,153,000 yen

Organization Chart and Administrators for Academic Year 2020



Administrators

Public University Corporation Iwate Prefectural University			
Chairman of the Board CHIBA, Shigeki	Iwate Prefectural University	Iwate Prefectural University Morioka Junior College	Iwate Prefectural University Miyako Junior College
Vice-Chairman SUZUKI, Atsuto	President SUZUKI, Atsuto		
Executive Director MIYANO, Takashi	Vice-President (Registrar, Academic Affairs) / Director, Center for the Advancement of Higher Education ISHIDO, Jun		
Trustee ISHIDO, Jun	Vice-President (Planning) / Director, Research and Regional Collaboration Office KANO, Toru		
Trustee KANO, Toru	Vice-President (General Affairs) / Secretary General MIYANO, Takashi		
Trustee (part-time) FUJIMURA, Fumiaki	Director, Education Support Office INOMATA, Toshimitsu		
Trustee (part-time) OBARA, Shinobu	Director, Student Support Office MIKAMI, Kunihiro		
External Supervisor (part-time) MASUDA, Hiroyuki	Planning General Manager HASHIMOTO, Koji		
External Supervisor (part-time) MIKAWA, Haruhiko	Dean, Faculty of Nursing Dean, Graduate School of Nursing FUKUSHIMA, Yuko	Dean of Morioka Junior College KAWASAKI, Masashi	Dean of Miyako Junior College MATSUDA Jun
	Dean, Faculty of Social Welfare Dean, Graduate School of Social Welfare TAKAHASHI, Satoshi		
	Dean, Faculty of Software and Information Science Dean, Graduate School of Software and Information Science KAMEDA, Masashi		
	Dean, Faculty of Policy Studies Dean, Graduate School of Policy Studies TAKASHIMA, Yuichi		

Number of Faculty

	Iwate Prefectural University	Iwate Prefectural University Morioka Junior College	Iwate Prefectural University Miyako Junior College
Professors	59	5	4
Associate Professors	69	9	5
Lecturers	41	6	6
Assistant Professors	13	2	0
Assistants	13	1	0
Researchers, etc.	4	0	0
Total Number of Faculty	199	23	15
Staff	167		
Total Number of Faculty and staff	404		



Chairman of the Board
CHIBA, Shigeki



President / Vice-Chairman
SUZUKI, Atsuto



Vice-President (Registrar, Academic Affairs) / Director, Center for the Advancement of Higher Education
ISHIDO, Jun



Vice-President (Planning) / Director, Research and Regional Collaboration Office
KANO, Toru



Vice-President (General Affairs) / Secretary General
MIYANO, Takashi



Director, Education Support Office
INOMATA, Toshimitsu



Director, Student Support Office
MIKAMI, Kunihiro



Planning General Manager
HASHIMOTO, Koji



Dean, Faculty of Nursing
Dean, Graduate School of Nursing
FUKUSHIMA, Yuko



Dean, Faculty of Social Welfare
Dean, Graduate School of Social Welfare
TAKAHASHI, Satoshi



Dean, Faculty of Software and Information Science
Dean, Graduate School of Software and Information Science
KAMEDA, Masashi



Dean, Faculty of Policy Studies
Dean, Graduate School of Policy Studies
TAKASHIMA, Yuichi



Dean of Morioka Junior College
KAWASAKI, Masashi



Dean of Miyako Junior College
MATSUDA Jun

*As of May 1, 2020



Takizawa Campus

Faculty of Nursing / Faculty of Social Welfare / Faculty of Software and Information Science / Faculty of Policy Studies / Morioka Junior College / Center for the Advancement of Higher Education / Graduate School of Nursing / Graduate School of Social Welfare / Graduate School of Software and Information Science / Graduate School of Policy Studies

152-52 Sugo, Takizawa-shi, Iwate 020-0693 Japan

TEL 019-694-2000 FAX 019-694-2001

<Facility Outline> Site area (actual measurement): 35.1 ha

Building area (total floor area): 81,304 m²

Regional Cooperation Building

(Iwate Monozukuri and Software Integration Technology Center(i-MOS), Center for Regional Policy Studies)

152-89 Sugo, Takizawa-shi, Iwate 020-0611 Japan

TEL 019-694-3330 FAX 019-694-3331



Miyako Campus Miyako Junior College

1-5-1 Kanan, Miyako-shi, Iwate 027-0039 Japan

TEL 0193-64-2230 FAX 0193-64-2234

<Facility Outline>

Site area (actual measurement): 5.6 ha

Building area (total floor area): 8,664 m²



Aiina Campus Satellite campus

1-7-1 Morioka-eki Nishi-dori, Morioka-shi,

Iwate 020-0045 Japan

Iwate Prefecture Citizen's Cultural

Exchange Center (Aiina) 7th Floor

TEL 019-606-1770 FAX 019-606-1771

<Facility Outline>

12 rooms including study rooms and

seminar rooms

Iwate Prefectural University Access Map

Directions to Takizawa Campus

●By Bus

Take an Iwate-ken Kotsu bus from Morioka Station East Exit Bus Stop 2 for 40 minutes, and get off at Kenritsu Daigaku-Mae Bus Stop.

●By Train

Take the IGR (Iwate Galaxy Railway) from Morioka Station for 15 minutes and get off at Takizawa Station. The campus can be reached within a 15 minute walk.

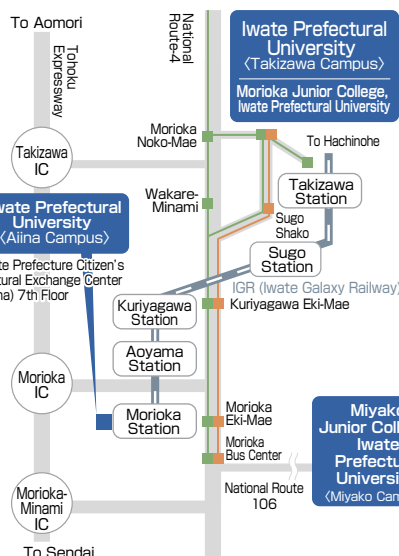
*City buses are also available from Takizawa Eki-Mae bus stop to Kenritsu Daigaku-Mae Bus Stop.

●By Car

About 5 minutes from Takizawa IC on the Tohoku Expressway (head toward National Route-4 bound for Aomori and turn right at the second intersection).

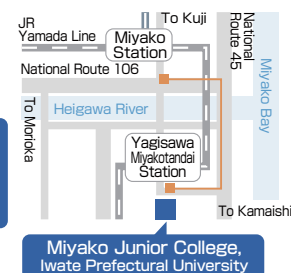
Directions to Aiina Campus

3 minutes on foot from the West Exit of Morioka Station.



Directions to Miyako Campus

About 2 hours from Morioka Station to Miyako Station by Express Bus (No. 106) or JR Yamada Line. From Miyako Station, take the B02 Yagisawa loop-bus from Bus Stop No. 2 and get off at Miyakotandai-Mae Bus Stop. Alternatively, take the Sanriku Railway's Rias Line from Miyako Station and get off at Yagisawa Miyakotandai Station. From there, it is a 15 minute walk.



岩手県立大学
Iwate Prefectural University

152-52 Sugo, Takizawa-shi, Iwate 020-0693 Japan

Tel 019-694-2000 Fax 019-694-2001

<https://www.iwate-pu.ac.jp>



Please see our website
for details

岩手県立大学

Search